



Pittsville School District Newsletter

OCTOBER, 2008

5459 Elementary Avenue, Suite 2, Pittsville, WI 54466
www.pittsville.k12.wi.us

715-884-6694

From the Desk of District Administrator Terry Reynolds



As you are well aware, in order to maintain the high academic standing/programming that everyone is so proud of, the District is preparing for a November 4 referendum to exceed the revenue caps for three years. Information has been provided in newspaper articles for several months now, and we included additional information within this newsletter once again to help answer questions regarding the referendum (Please read Referendum Question and Answer Fact Sheet).

The District will be sponsoring two referendum informational meetings on **October 1 and 15**. These meetings will be held in the Pittsville School District Conference Center, beginning at **7:00** both evenings. I encourage everyone to attend one of these meetings to gain a better understanding of why the district needs a funding being asked, and the impact upon the district and residents. We hope to answer any questions you may have regarding the referendum so you can make an informed vote on November 4.

Two area Schools just passed referendums on September 9. Colby passed a \$2,550,000.00 referendum to replace and maintain school district buildings and grounds, and an additional \$1,400,000.00 to fund their unfunded liability prior service. Neillsville, passed a \$300,000.00 referendum for five years, totaling \$1,500,000.00 for ongoing operational and maintenance costs.

If you ever have questions or concerns regarding the School District, please feel free to contact me at (715) 884-6694 or reynoter@pittsville.k12.wi.us

WHO DO I CONTACT?

Terry Reynolds , District Administrator	715-884-6694
John Olig , Senior High Principal	715-884-6412
JoAnn Sondelski , Elementary Principal	715-884-2517

HONEYWELL INSTANT ALERT

Please remember to log into your profile at any time to update your contact information. Maintaining accuracy will increase the ability of the school to keep you informed. The system can be found through a link on the district website or at <https://instantalert.honeywell.com>. If you need assistance with your profile, please go to <https://instantalert.honeywell.com> and click on the **Help Request** link on the lower right hand side of the page, or contact the school at 884-2517 (elementary office), 884-6412 (High School office) or the district office at 884-6694.

STUDENT INFORMATION WEB ACCESS-STIHome+

STIHome+ provides parents and students with a means of accessing school information from a remote computer, via the Internet. This information may include: student schedules, school calendar, student demographics, attendance record, and grades. Student information is secure and can only be accessed by User ID and password. You can find links to STIHome+ on the District web page at www.pittsville.k12.wi.us. For more information about how to use STIHome+ or for login/password changes and information, please contact the school office.

**IF YOU HAVE CHILDREN UNDER THE
AGE OF FIVE LIVING IN YOUR
HOUSEHOLD, PLEASE CALL 715-884-6694
TO ADD THEM TO OUR CENSUS.**



Don't forget to VOTE.

LEARN MORE ABOUT THE NOVEMBER 4TH REFERENDUM

Please plan to attend one of the upcoming public informational meetings concerning the November 4th Referendum.

OCTOBER 1 and OCTOBER 15

Both meetings start at 7:00 p.m. and will be held in the District's Conference Room.

Contact Terry Reynolds, District Administrator, for more information at 715-884-6694.

October 2008 Events

SUN	MON	TUE	WED	THU	FRI	SAT
			1 Public Info Meeting on the Nov 4 Referendum 7 PM Conference Center	2 Fr FB vs McDonnell VB vs Iola-Scandinavia Parents Night JH VB vs Assumption	3 FB at Edgar	4 PAFA presents: Becky Schlegel Duo 7:30 PM Auditorium
5	6 Jostens Here 8:00 AM Seniors 8:30 AM Sophomores JV FB at Edgar JH FB vs Auburndale	7 JH VB at Edgar CC at Auburndale VB vs Assumption Senior Night ES Mid-terms Mailed	8 Cranberry Tour 9:30 AM	9 JH VB vs Stratford Fr FB vs Edgar	10 Cranberry Tour 9:30 AM FB vs Prentice/Rib Lake Parents Night	11
12	13 JH VB vs Athens JV FB vs Prentice/RL	14 VB at Marathon JH FB at Marathon Anti-Bullying Workshop 7 PM Auditorium	15 Cranberry Tour 9:30 AM ES Fundraiser Pickup 3:00-6:00 PM Public Info Meeting on the Nov 4 Referendum 7 PM Conference Center	16 CC Conf at Park Falls Fr FB at Rib Lake	17 Cranberry Tour 9:30 AM FB at Park Falls	18 VB at Wausau West
19	20 JV FB at Park Falls JH FB vs Assumption	21 Senior Citizen Luncheon HS Picture Day VB Regionals	22 Cranberry Tour 9:30 AM	23 FB vs Auburndale Senior Night	24 CC Sectionals VB Regionals	25 CC Sectionals at Arcadia VB Regionals HS Play: Good Morning Mrs. Dove, 7:00 PM
26 HS Play: Good Morning Mrs. Dove, 1:30 PM <i>Red Ribbon Week</i>	27	28 FB Level 1	29 Red Ribbon Week Around the Track 2 PM	30 TEACHER IN-SERVICE NO SCHOOL	31 TEACHER IN-SERVICE NO SCHOOL Happy Halloween	

*"The objective of education is to
prepare the young to educate
themselves throughout their lives."*

- Robert Maynard Hutchins





PITTSVILLE HIGH SCHOOL NEWS

In this newsletter I would like to address two topics which are close to the hearts of parents. Every parent wants to protect their child and see their child successful after leaving high school. The first topic is online safety. On Wednesday, September 10th, I attended the monthly Marawood Conference meeting. At the end of each meeting, we have a round table which allows each principal to ask questions of his or her peers or speak about a pertinent issue which is affecting that principal's school or community.

When the topic rolled around to one of the principals, this principal spoke of a student from Chicago who was chatting online with his students. This student from Chicago was telling the students from this Marawood Conference School that he was transferring to their school. It had reached the point where on a number of occasions the principal was asked, as were other staff members, about a student transferring from Chicago. No one associated with the school had heard anything about such a transfer.

About a week later, the parents of a fourteen-year-old girl from this school also asked about a student transferring to their school from Chicago. It turns out that this said transfer student wanted to meet the young girl from this local school district. The email account the student from Chicago was operating under was bogus. There is no transfer student from Chicago. They believe the girl and other students in that school were communicating with an online predator.

I have written this article carefully to not identify the school involved to protect the identity of the young girl. With that said, my colleague wanted to get the message out. The message is clear. We need to take internet safety seriously. This is about a student from a town close to us. This is not about a girl from a large city in a different state. Last year, Wood County Officer Dean Berres came to school to speak about online safety in our auditorium. He specializes in online safety. He can share more stories about kids close to Pittsville who have made mistakes online. I could ask Dean to do this again, but I need to know if there is interest. It is hard to ask Dean to come and speak to only 10 people. If you call the high school office and leave your number, I will see if there is enough interest to bring Dean Berres back to Pittsville to speak about online safety.

If you have ever heard Dean speak, one of his first points is to put the computer in a public area in your house. The child's bedroom is not a good location for a computer if you are concerned about online safety. I am not looking to block students from internet access, but for your child's protection you need to learn about the internet and how to safeguard your child. The last topic I want to discuss is what happened to a fourteen-year-old child from Pittsville. Finally, this story was about a girl. Similar things can happen to boys.

Moving on to the next topic I want to discuss, student success after high school. I am going to address the topic of ACT Scores and what you can do to prepare your son or daughter for the ACT. As was noted in the Pittsville record when Terry Reynolds, school district superintendent, submitted an article last month, the senior class of 2008 had some strong scores. In fact, 65% of the class of 2008 took the ACT. Their composite score (all four sub test scores combined English, Math, Reading, and Science) was a 23. The top score for the ACT is a 36. The state average is 22.3. The senior class of 2008 ranked 72nd in the state when compared to the other 420 public high schools based on composite average or roughly the top 20%.

If you take the performance of Pittsville High School in the past nine years, you will find our nine year average to be 22.256. The state average during the same period was 22.178. Again, we are above the state average. In fact, we rank 121st of the 420 high school in the public state. This would be in the top 30%. Only 132 of the schools in the state tested above the state average over the nine year period. When we look at the high schools with enrollments under 300 students, you will find that we are 17th out of 163 schools. Over time our scores look good. The next question is, "How can we continue this positive trend?"

Every year the ACT prepares a report to the high schools containing the school's averages, the state average, and ideas to help students prepare for the ACT. This year, I spoke in all of the junior and senior English classes about the ACT and other topics. Here are some comments I shared with the students. The first way to prepare for the ACT is to sign up for rigorous classes. Students who take classes like Advanced Math, Calculus, Advanced Biology, Chemistry, and the more difficult AP classes are more likely to score better on the ACT. If your son or daughter is looking at a four-year college, these are some classes to consider. There are other classes which I did not state due to constraints of time and space. For example, I would recommend Spanish. Some universities, such as Madison, require two years of a foreign language. Madison may now require three years of a foreign language. It should be no surprise that students planning to go to a four-year college should be taking these classes. I made these comments about taking rigorous classes prior to the last day to make schedule changes to help students make changes to assist in their preparation for their future.

PITTSVILLE HIGH SCHOOL NEWS (CONTINUED)

The ACT, in particular, states that students taking Algebra 1, Algebra 2, and Geometry typically do better than students with than less two years of math. These three classes are really the minimum for any four-year college bound student. In science, students who take Biology and Chemistry, in combination with Physics generally score better. Usually, we have enough interest to offer Physics every other year in Pittsville. The point is simple, to score well on the ACT is not easy. Students need to be willing to work. Taking rigorous classes will not insure a great score either. Time on task is important.

Besides class work, another factor is important, maybe the most important skill for students taking the ACT, is reading. Students, who read more, have a better chance of scoring higher. First, the tests are reading based. If you cannot read and comprehend the questions, your chance of selecting the correct answer is not likely. Second, reading increases vocabulary. It is hard to select the correct answer when you don't understand the meaning of the words in the questions. Encouraging your son or daughter to read at an early age can reap benefits as he or she prepares for college.

The next area is test preparation. Sample tests with test taking strategies are available in the guidance office. These booklets are provided to us at no charge from ACT. We also have books with retired tests and more strategies in the library. Taking sample tests and reading the strategies is a great way to prepare for the ACT. I have found that students are willing to take practice tests, but don't want to read about the various strategies. I have come to believe that reading the test-taking strategies may be an opportunity often overlooked. I am also looking into opportunities for our students to take an online test preparation course through a virtual school. I have heard students can do this free of charge. This will probably be more suited for juniors and seniors because they have been exposed to more of the course work which is tested by the ACT.

Finally, I want every parent to realize that not every student is going to a four-year college. There is a need for students to be exposed a variety of options in school. Classes in Agriculture, Technical Education, and Family and Consumer Education expose students to a variety of well-paying professions which require only two years of school at a technical college although classes like Advanced Biology, Chemistry and Physics are extremely important for student looking at the medical profession. Chorus and Band are great life time activities which can supply balance to our lives. There is more to a balanced student taking all the rigorous classes, but we need to point out the necessity to take the correct classes to prepare the student for his or her future.

John Olig
Senior High School Principal

SCHOOL TO WORK UPDATE

Lisa Millard, a 2008 graduate, was awarded a Youth Apprenticeship certificate from the Wisconsin Department of Workforce Development in August. She attended MSTC to earn Nursing Assistant certification and was hired as a C.N.A. at Golden Living Center in Marshfield. Lisa was required to work 450 hours as well as completed a competency checklist to be eligible for the YA certification. Congratulations to Lisa.

Currently PHS has five more students working toward YA certification. Cade Krieger is employed as a Youth Apprentice through the welding program at Innovative Machine Specialists. Karissa Quinlan, Amber Guden, and Mickenzie Hahn are youth apprentices in the Health Care field. They are all working at Bethel Living Center to meet their competencies. Paul Totzke is working at PC Doctors in Marshfield in the IT youth apprenticeship program.

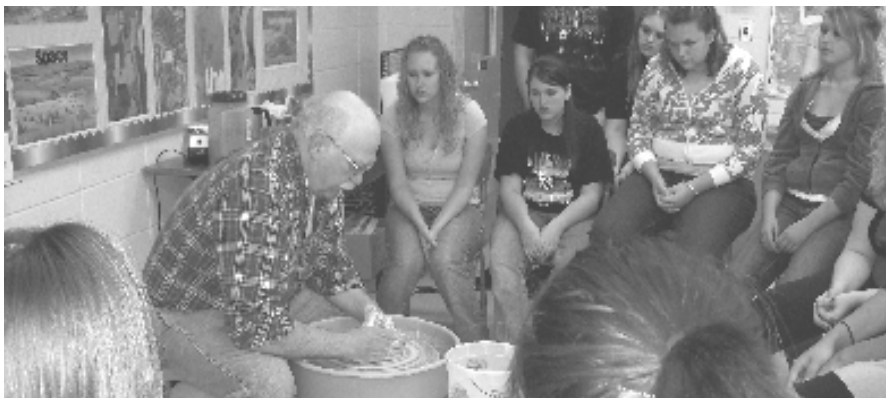
The school to work program is continuing to work with students to arrange job shadowing opportunities. Our goal is to help students prepare and transition into work opportunities that we enhance their future goals. If you are interested in more information please contact Rae Ann Leonhardt.

Pottery is Back in Pittsville!

As part of the Pittsville High School art program, a ceramics course is offered to the art students. The students started the year learning about the history of Pittsville Pottery. To view Pittsville Pottery the class walked to the Pittsville Area Historical Society.

Part of the ceramics program is experiencing throwing pottery on a pottery wheel. Area artist, Dave Lyons, demonstrated how he throws cups, bowls, and vases. He also showed the class how to make a mug by using a mold as he explained this technique.

Once again the art department will be putting the students' art work on display during the art show on November 25th (4:30-7:30) and November 26th (7:30-10:30). The public is welcome; so mark your calendars!

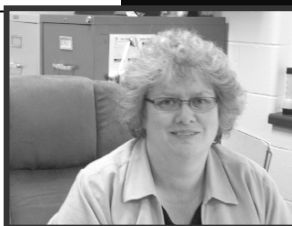


PITTSVILLE ELEMENTARY NEWS



Dear Parents and Students,

We have had an awesome start of a school year! I am so proud of our students, paraprofessionals, and teachers for the work that they have done to make this happen.



I want to remind you of an opportunity that our school offers to students who need a little bit of extra help in getting their work completed. Miss Cindy Schooley runs an after-school resource room every Tuesday and Thursday from 3:10-4:00 p.m. Students in Grades 4-8 are encouraged to participate in this opportunity to help them with work completion. Miss Schooley is available to offer assistance in areas that need work.

Please mark your calendars for an upcoming event sponsored by the PTO. On October 14th, we will sponsor a workshop type evening on ways we as adults within the school community can work to rid bullying from our schools. More information will follow on this. I hope that you will look for this information and make every attempt to attend.

As I stated earlier in this note, we have had an awesome start. Creating a positive learning environment is dependent upon all of us working together in a productive way. An old African proverb states that it "takes a village to educate a child." One of our goals this year is to achieve hallways that are quiet and orderly. Sometimes children's excitement gets the best of them and they forget to walk and use inside voices. As adults in the school community, I hope that you encourage your child(ren) to be respectful of environments where learning is taking place. Some of our junior high students have volunteered to help monitor the hallways during lunch time as a way to do their part. They are a wonderful help to us, as they are leading by example. If we all work together we can achieve a well-ordered school. I look forward to the month of October and once again working with all of you on our continual goal of creating a positive school environment.

Fall is such a beautiful time of the year. I hope you are able to get outside and enjoy the weather and the colors that are so delightful to see.

Sincerely,
JoAnn M. Sondelski,
Elementary Principal

Please be sure to contact the elementary school office when there are changes to your address, telephone number, e-mail address, and or emergency contact information.



On Wednesday, August 27th, 2008 the district's teaching staff gathered together for a yearly review of the WKCE data. This data review day offered all of the staff an opportunity to work with members of the CESA 5 data analysis team to analyze the strengths and weaknesses of students and develop a plan on how we can work together to insure achievement.

FUNDRAISER PICKUP

October 15 from 3:00 to 6:00 PM
Elementary Cafeteria

REMINDER: All orders must be paid for when products are picked up. Payment must be made in the form of one check or cash for the entire order. No orders will be distributed unless payment is received.

WE NEED YOU!

Do you often dream for days long ago when you were in school and you had lunch time with your friends and recess time to play? Well, bring your dreams to reality. We have opportunity at the elementary school to help supervise students in the lunch room and in the hallway during lunch times on a volunteer basis. If you would like to help, please call Mrs. Sondelski at school.

SENIOR CITIZENS LUNCHEON

Once again, the students of Pittsville Elementary School will host our area senior citizens for lunch and entertainment. This year's event will be held on October 21, 2008 beginning at 11:00 a.m. We hope that you will pass the word along to grandpas, grandmas and neighbors who fit the description "senior citizen." We want to share with as many people possible the great things that happen here in our school. Lunch is on us, and is sure to be good! So, pass the word. If you have any questions, please call the school office.





PITTSVILLE ELEMENTARY NEWS (continued)



Congratulations to Jackie Heinzen and Susanne Niehaus on receiving the honor of the CRYSTAL APPLE TEACHER OF DISTINCTION.

A total of 239 educators were nominated for this award, and four of the Teachers of Distinction will be honored as Crystal Apple teachers on October 2.

The Crystal Apple Awards, organized by the Marshfield Area Chamber Foundation's Partners In Educational Excellence and Workforce Development, recognizes educators who use innovative teaching methods that meet the changing challenges of today's classroom.



RED RIBBON WEEK October 27 - Friday, October 31

This year's annual Red Ribbon Week Celebration is just around the corner! The theme this year is "The Future Relies on You and Me. Be Drug Free!" In conjunction with our Red Ribbon Week activities, we will once again be doing a project to support the community and its future. Students are asked to bring in nonperishable items to donate to the Pittsville Food Pantry. Some items that they are in need of includes, but isn't limited to, paper products, juices, boxed meals, pudding/jello, and laundry items.

During Red Ribbon Week, we will also be having some school-wide fun with various guest speakers and dress up days for the week.

Monday: My Future is So Bright! Dress for your Dream Job!

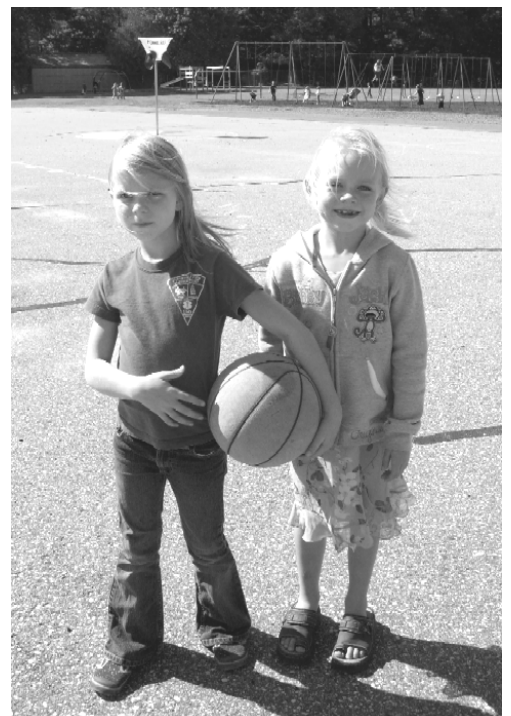
Tuesday: Give Drugs the Boot! Wear your boots and whatever goes with them!

Wednesday: Wear Red Day!

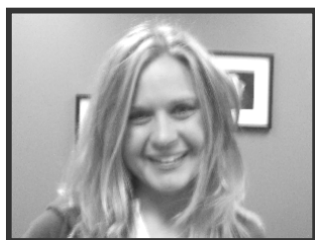
On Wednesday, October 29, we will be concluding Red Ribbon Week with our annual walk around the track. Everyone is invited to join us as we wrap up another exciting week of focusing on saying no to drugs, alcohol, and tobacco. The walk will begin at 2:15 and conclude at 2:45. Make sure to wear your Red!

HALLOWEEN SAFETY TIPS

- Carry a flashlight
- Walk, don't run.
- Stay on Sidewalks
- Obey traffic signals
- Stay in familiar neighborhoods
- Don't cut across yards or driveways.
- Wear a watch you can read in the dark.
- Make sure costumes don't drag on the ground.
- Shoes should fit (even if they don't go with your costume)
- Avoid wearing masks while walking from house to house.
- Carry only flexible knives, swords or other props.
- (If no sidewalk) walk on the left side of the road facing traffic
- Wear clothing with reflective markings or tape.
- Approach only houses that are lit.
- Stay away from and don't pet animals you don't know.

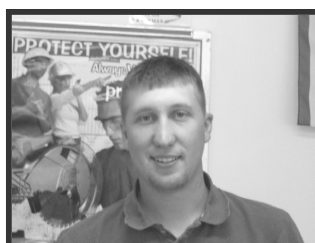


MEET THE NEW STAFF...



Hi! My name is **Julia Ratsch** and I am very excited to be part of the Panther family as the High School Guidance Counselor. Although not a Pittsville native, I grew up close by in the neighboring communities of Granton (through first grade) and Neillsville (second grade on.) I graduated from Neillsville High School in May of 1998 and began my college career at UW-Madison that fall. After my freshman year, my love for horses and childhood dreams of mountains prompted my move to Colorado for a summer job on a dude ranch; needless to say, after that, I was hooked. I spent the next nine years continuing my education and beginning my career as a Colorado transplant. During my time there, I completed my B.S. in Agriculture Education at Colorado State University and my M.A. in School Counseling at the University of Northern Colorado. In addition to being a student, I was also able to enjoy four years of teaching (middle school FACS) and one year of guidance counseling (high school level.) Although my time in Colorado was enjoyable, after graduating in May, my desire to settle down close to family brought me home to Wisconsin for good.

I am grateful for the opportunity to work in central (the VERY center might I add :) Wisconsin as it is the place I call home. As I learn more about each student individually and the school community as a whole, I know I am very fortunate to work here in the Pittsville community. Thank you for making me feel welcome and at home already; it has been a most enjoyable first month and I anticipate the rest of the year to be nothing less.



Hello. My name is **Eric Winter** and I am the new Technology Education Teacher here at Pittsville. I am a recent graduate of the University of Wisconsin-Stout and a 2002 graduate of Phillips High School. I was raised on a small dairy farm in southwest Price County along the Jump River. Growing up I was consumed with anything dealing with the outdoors. Although I enjoy any type of outdoor activities; bow hunting, fly fishing for bass and bobcat hunting are by far my favorite things to do.

I am looking forward to becoming a member of the Pittsville community and getting to meet as many people as I can over the next few months. I've been helping out with the cross country teams and am really excited at how well they have been running. Along with helping coach cross country I am excited to see how many other activities I can get involved in while teaching here.

I have been in awe at how respectful and how motivated to learn the students have been so far in the Pittsville School district. This first month of teaching has been a great experience and I am grateful to have the opportunity to become a Pittsville Panther! Go Panthers!



Greeting to all of you! My name is **Cheryl Ashbeck**; I am the new LMC Assistant for the district and I will be working primarily out of the high school LMC. I have a bachelor's degree from UWSP in History and Political Science. Most recently, I have been substitute teaching in both the Marshfield and Auburndale school districts, primarily in grades 6 through 12.

I grew up in Marshfield and still reside there with my husband Al and our two sons, Louis (18) and Elliot (14). We are the proud parents of two freshmen this year; Elliot attends Marshfield High School and Louis is at "The Wood" campus in Marshfield. Both of the boys are very active in sports so we spend much of our free time following them around Wisconsin watching them play football, basketball or baseball. In any free time that may remain, I like to cook and bake for family and friends. I also enjoy singing in my church choir and am active in other activities there as well.

I am looking forward to working at the high school and meeting as many of the students as possible. I hope that the LMC will be a place that the students feel welcome, whether it is to study quietly, use the internet or other resources to research a class assignment, find a book for pleasure reading or to just simply relax with some leisure reading of one of the many magazines the LMC subscribes to. Please encourage your student to stop by, say hello and see what the LMC has to offer!



I am **Katie Craig**. I am the new Speech-Language Pathologist in the Pittsville School District. I received my Bachelor's in Communicative Disorders from the University of Wisconsin-Stevens Point in 2006. I then went on to pursue a Master's in Speech-Language Pathology from UWSP, which I received in May. During graduate school, I married my husband, Aaron. We have been married for a year and a half. Aaron and I recently bought our first home in Stevens Point which was an exciting and exhausting experience!

I am also happy to share we are expecting our first child November 11. This has been a year filled with new and exciting endeavors and I am thrilled Pittsville is a part of that. Though my education at UWSP was exceptional, I know my education will continue in the Pittsville School District. I will learn as much from the students as they will from me! I am eager to begin my career here and look forward to working with the wonderful students, staff and community members.

PITTSVILLE SCHOOL DISTRICT REFERENDUM FACT SHEET

On Tuesday, November 4, 2008, district residents will be asked to vote on a recurring referendum to allow the School District of Pittsville to budget an additional \$175,000 beyond what is allowed by the current Wisconsin school revenue limits for each of the next three years. The ballot will ask voters to approve or reject the following resolution:

BE IT RESOLVED by the School Board of the School District of Pittsville, Wood, Clark, Jackson, and Juneau Counties, Wisconsin, that the revenues included in the School District budget be authorized to exceed the revenue limit specified in Section 121.91, Wisconsin Statutes, by \$175,000 for the 2008-2009 school year; by an additional \$175,000 for 2009-2010 school year (for a total of \$350,000) and by an additional \$175,000 for 2010-2011 school year and thereafter (for a total of \$525,000), for recurring purposes consisting of ongoing operation and maintenance expenses.

This Fact Sheet has been developed to help you understand the referendum ballot and reasons behind the decision to hold a referendum at this time. If you have any questions about the referendum, you are urged to contact Terry Reynolds, District Administrator, at 715-884-6694. For additional information, please contact the district's website at www.pittsville.k12.wi.us.

Q. WHY DO WE NEED TO HAVE A SCHOOL DISTRICT REFERENDUM?

- Wisconsin school districts have operated under revenue controls since 1994. The average annual increase in the Pittsville District's revenues over that time period has been at an average 2%. Expenses, such as personnel costs, bussing, energy and utilities, and maintenance projects on the other hand have easily out paced revenue increases (4%), which in turn have forced the district to make reductions in staffing, programs, and maintenance expenditures. Declining enrollments and an increase in equalized property valuations during the last ten years have compounded the problem, as state aid formulas and revenue limit calculations are based on both of these factors which has resulted in less revenues coming into the district.
- School districts must seek permission from local residents in order to raise additional revenue for the district's operating budget beyond the revenue controls imposed by state statute.

Q. HOW WILL A SUCCESSFUL REFERENDUM AFFECT MY PROPERTY TAXES?

- Approval of the recurring referendum to exceed the revenue limit would add an additional \$175,000 on the district revenue base for the next three years. The impact from a successful referendum would have the following property owner's financial tax impact on a home value of \$100,000:

	<u>FY-2008</u>	<u>FY-2009</u>	<u>FY-2010</u>	<u>FY-2011</u>
	\$822	\$865	\$919	\$1,020
Tax Change:	\$55	\$106	\$158	

- An individual's property tax is also subject to change through reassessment, changes in the total value of district property, and variations in assessment ratios.

Q. HOW DO OUR CURRENT MILL RATES COMPARE WITH OTHER AREA PUBLIC SCHOOLS SIMILAR IN SIZE TO THE PITTSVILLE SCHOOL DISTRICT?

- According to the 2007-08 Wisconsin DPI statistics, Pittsville ranks seventh among the 11 area schools which are similar in size to Pittsville. Area schools and their mill levy rates for 2007-08 were:

Athens – 10.39, Granton – 9.98, Marathon – 8.76, Rib Lake – 8.73, Prentice – 8.58, Spencer – 8.54, Pittsville – 8.22, Edgar – 8.18, Auburndale – 8.14, Abbotsford – 7.67, and Stratford – 7.32.

Q. HOW WOULD THE DISTRICT USE THE REFERENDUM FUNDS?

- The funds would be used for several purposes. The majority of funds would allow us to maintain current educational programming (including reinstatement of the Business Education program which was put on hold during the 2008-09 school year), and provide the students with updated textbooks, and necessary technology replacements in the district.
- Funds will be used to continue to maintain the district's roofs and air conditioning units, especially at the Elementary school replacement of both the roof and roof air conditioning units will need to take place in the next few years.
- The district will replace old boiler systems, which operate at a low efficiency, and will attempt to improve lighting, cooling, and heating systems through out the district to save the district money over time.
- The funds will assist in the replacement of the aging telecommunications system and install video surveillance systems which will improve the security and safety for students and staff.

Q. WILL A SUCCESSFUL REFERENDUM PREVENT THE NEED FOR FUTURE REDUCTIONS IN STAFF OR PROGRAMMING?

- The district will continue to look critically at its budget and expenditures. The referendum does not provide resources to restore reductions that have been made in the past (other than the Business Education position which was placed on hold for one year), nor are there plans to expand programming that would incur additional annual costs unless they are offset by reductions in other areas.
- Staffing has always been closely tied to enrollment. Enrollment trends will continue to influence staffing patterns throughout the district. Our projections indicate that additional staff reductions will be necessary regardless of passage of this referendum, due to the declining enrollment trends.

**PITTSVILLE SCHOOL DISTRICT REFERENDUM
FACT SHEET (CONTINUED)**

Q. DO OTHER DISTRICTS FACE SIMILAR FINANCIAL CHALLENGES?

- More than half of Wisconsin's 426 school districts have held similar referenda to exceed the revenue controls. School Districts of Marshfield, Auburndale, Colby, and Edgar are a few of the area districts holding referendums in the past few years.

Q. WHAT WILL HAPPEN IF THE REFERENDUM IS DEFEATED?

- If the referendum does not pass, maintenance and capital improvement projects such as boiler and roof repair will be delayed. However, the district cannot maintain current educational programming or facilities without additional funds, so it is likely there will be future attempts at passing a referendum to avoid further cuts in the educational and extra-curricular programming of our students. A list of possible future programming and staffing cuts is being developed by the School Board and Administration to provide the public more specific information regarding the necessary programming cuts which will be necessary if a referendum fails.

Q. HOW CAN WE LEARN MORE ABOUT THE REFERENDUM?

- The Board has set two dates for public informational meetings concerning the November 4 referendum. Dates set are: October 1 and 15. Both meetings start at 7:00 p.m. and will be held in the District's Conference Room. Please plan to attend one of these sessions.
- Contact Terry Reynolds, District Administrator – 715-884-6694

REFERENDUM DATE

Tuesday, November 4, 2008

PITTSVILLE FFA/FFA ALUMNI presents

"SPLASH OF RED CRANBERRY HIGHWAY TOUR"

2006 NATIONAL AWARD WINNER for "The Council for Corporate & School Partnerships"
Recent Cover of the National FFA Magazine "New Horizons" October 2007

The **Pittsville FFA/FFA Alumni** are giving cranberry tours this year to help pay for student scholarships, trips, and many more member related activities. This 2½ hour cranberry tour takes place just east of Pittsville in the heart of central Wisconsin Cranberry Country. Pittsville FFA Members and students of the only Cranberry Science Class taught in the nation will give this all-inclusive tour. **Pittsville School District residents are welcome to take the tour FREE of charge. If you would like to stay for lunch there is a \$5 fee.**

The tour will meet at the Pittsville Administration Conference room located on Elementary Avenue just off First Avenue in Pittsville at 9:30 AM. The tour includes the following:

- Touring a current marsh under construction
- New beds not yet in production
- Producing beds with the tourists given the opportunity to pick fresh fruit from the vine
- As well as observing harvest, testing, cleaning and freezing of the berries

Finally, a box lunch that includes cranberry treats made by our Foods Class at Pittsville High School. The charge for the tour is \$20 dollars per person, **discounts for school tours.** Reservations are a must to let the FFA know how many are coming. **Please call 715-884-6412.** The dates of the **Splash of RED Cranberry Tour** from 9:30 AM - 12:00 PM are as follows:



Wednesday, October 8
Friday, October 10
Wednesday, October 15
Friday, October 17
Wednesday, October 22
Friday, October 24

Again, please call ASAP since there is a limited amount of seating for our tours each day. Please call to set your reservation at 715-884-6412.

Thank you for supporting the
PITTSVILLE FFA and PITTSVILLE FFA ALUMNI!

PITTSVILLE PURE HEARTS RELAY TEAM

*This summer students and community members created a team called the **Pittsville Pure Hearts** for the Relay for Life event which took place on the August 1 & 2. The Relay for Life program celebrates cancer survivors and raises money for cancer research. The team gathered at the Marshfield Junior High track along with many other teams from Central Wisconsin. Many activities were held during the event including a speech by cancer survivor Karissa Quinlan about her struggle with cancer. Team members walked around the track in shifts continually throughout the night.*

Our relay team included Sarah Freedlund, Karissa Quinlan, Christain Coyle, Taylor Wilke, Amy Wilke, Stephanie Zdun, Deb Zdun, April Tritz, Angie Tritz, Cathy Tritz, Devree Vogel, Kyle Wilke, and Rae Ann Leonhardt, who also served as team captain. We donated our time to raise money by holding a brat fry and organizing donation jars throughout the Pittsville area.

*The **Pittsville Pure Hearts** would like to thank everyone who donated their time or money to support our team as well as cancer patients. It was very much appreciated. The team hopes to break the fundraiser record for the upcoming year and would welcome anyone who would like to join or help the cause.*

Submitted by: Angie Tritz

GOOD MORNING, MISS DOVE

Pittsville High School is proud to announce that Ms. Sarah Freedlund and Mrs. Gail Possley are co-directing the 2008 Pittsville Drama Club production, **Good Morning Miss Dove** written by William McCleery. This play will be presented October 25th at 7:00 pm and October 26th at 1:30 pm in the Pittsville School auditorium. Ms. Freedlund and Mrs. Possley also co-directed the 2007 production, **Occupation, Murder**.

The timeframe of the play is set in the post-war era of the 1940s. Miss Dove has been teaching for over 30 years. She is not only a strict disciplinarian, but she is also a very well-respected teacher at Cedar Grove School in Liberty Hill. The whole community is aware of the profound impact she has made on her students.

One day after class, Miss Dove experiences pain in her back. She asks one of her students to get Thomas Baker, a doctor and former student. While in the hospital, past students rally around "Old Miss Dove". Dr. Baker recounts how he survived shipwreck and thirst thanks to a shining vision of Miss Dove. "She was right there with me all the time!" Ex-pupils donate blood, symbolizing their ties to Miss Dove, and the reciprocity of their relationship.

While in the hospital Miss Dove reflects on her childhood and her life as a school teacher. She had been a beautiful, vivacious young woman who shared her father's passion for geography. Her father raised her in a beautiful mansion with all the privileges that wealth could afford. When her father died suddenly, Mr. Porter, the bank president, informed the family that Mr. Dove had left a sizable debt. To prevent a slur on her father's memory, Miss Dove worked to repay his debt.

This sentimental play is timely due to the upcoming presidential election. Miss Dove teaches all of us the importance of citizenship, honesty and fairness. Her message that "The strength of democracy lies in its diversity" is just as powerful today.

Good Morning Miss Dove will have 18 speaking roles and several extras- including the glee club singing the school song and a class of misbehaving students.

(The 1955 film, starring Jennifer Jones as Miss Dove, was based on the novel written by Frances Gray Patton.)

by Gail Possley

PITTSVILLE FFA MEAT & LABOR AUCTION SATURDAY, OCTOBER 18 at the PITTSVILLE COMMUNITY CENTER

The Annual Pittsville FFA Labor and Meat Auction is set for Saturday, October 18 in the Pittsville Community Center. The doors open at 7:30PM and the auction starts at promptly at 8:30PM. It includes free refreshments and beverages and lots of fun. The Pittsville FFA will hold its Annual Meat and Labor Auction which helps raise money for the FFA for scholarships, trips and much, much more. The labor part help FFA members become involved in community service.

This year's labor auction will sell students for 6 of hours of labor to the highest bidder. This year the FFA members will all be sold together in groups. Some of the jobs they will be involved in are cleaning house, raking leaves, painting, heavy labor, baby-sitting, pet care, milking and computer work to name a few.

Last year a person could buy U.S. Choice No. 1 meat of pork, beef or lamb for under \$2.17/pound and student workers for less than \$4/hour. So if you need meat or chores around the house done, come on down to the auction. You will save money by being there!

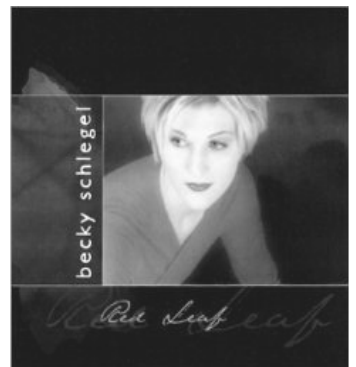
The FFA and FFA Alumni wish to thank all those individuals who supported the Meat and Labor Auction in the past. As well as the following business for donating this year's meat Hay Creek Pellet, Gardner Cranberry, Tex Sand, H & S Manufacturing, Harmony Co-op and the Pittsville FFA Alumni. The proceeds will continue to go toward supporting the FFA and its members on the numerous trips and activities they take each year.

PITTSVILLE AREA FOUNDATION FOR THE ARTS PRESENTS . . .

**Saturday, October 04, 2008
Becky Schlegel Duo**

Deeply imaginative and achingly personal, Becky Schlegel's songs are a distinctive blend of country, bluegrass, folk and blues. Her pure, sweet voice with its hint of country twang allows her to woo her listeners with a heartfelt ballad one minute, and rock their souls with rousing bluegrass the next. Visit Becky at:
www.beckyschlegel.com.

Sponsored in part by:
Baum's Mercantile, Pittsville Homes, Inc.,
Pittsville Therapy Services, Pittsville Vision Center
North Wood Graphics & Design, LLC



Show Time: 7:30 pm

Tickets: Adults \$10
Seniors \$8
Students \$5

OCTOBER LUNCH MENU

MONDAY	TUESDAY	WEDNESDAY	THURSDAY	FRIDAY
Oct – 6 CHICKEN NUGGETS mashed potato fresh bread chilled fruit shape-ups milk	Oct – 7 FISH SQUARE ON A BUN or HAMBURGER ON A BUN french fries chilled fruit relish sticks & dip sliced cheese milk	Oct – 8 NACHOS cheese sauce taco meat tatertot casserole chilled fruit salad bar milk	Oct – 9 HOT PASTA turkey ala king chilled fruit buttermilk biscuit milk	Oct – 10 CHEESE QUESADILLA salad bar Spanish rice chilled rice fruit snacks milk
Oct – 13 SAUSAGE PIZZA TUNA SALAD KAISER salad bar pasta salad chilled fruit jello milk	Oct – 14 CORN DOG ON A STICK baked beans hot pasta chilled fruit milk	Oct – 15 HOT HAM ON A BUN macaroni and cheese green beans chilled fruit sliced cheese rocket pop milk	Oct – 16 SPAGHETTI Italian sauce corn dinner rolls chilled fruit milk	Oct – 17 FRENCH TOAST STICKS sausage links juice chilled fruit trail mix milk
Oct – 20 PIZZA DIPPERS salad bar chilled fruit pasta salad chewy granola bar milk	Oct – 21 BREADED CHICKEN on bun mashed potato chilled fruit chocolate chip cookie milk	Oct – 22 SLOPPY JOE or HAMBURGER ON A BUN potato wedges carrot coins chilled fruit sliced cheese milk	Oct – 23 HARD SHELL TACO or SOFT SHELL pizza casserole fresh bread shredded cheese chilled fruit milk	Oct – 24 SUB SANDWICH chicken noodle soup sea animal cookies chilled fruit milk
Oct – 27 CHEESE FRIES HAM & CHEESE KAISER broccoli rice salad bar chilled fruit yo-stix milk	Oct – 28 CHICKEN NUGGETS cheese potatoes fresh bread chilled fruit shape-ups milk	Oct – 29 MINI CORNDOGS baked beans hot pasta chilled fruit milk	Oct – 30 NO SCHOOL	Oct – 31 NO SCHOOL

2008-2009 LUNCH PRICES

Grade 4K - 4	\$2.10
Grade 5 - 8	\$2.50
Grade 9 - 12	\$3.00
Adults	\$3.25
Milk	\$.30
Reduced Lunches	\$.40

LEARN MORE ABOUT THE NOVEMBER 4TH REFERENDUM

Please plan to attend one of the upcoming public informational meetings concerning the November 4th Referendum.

OCTOBER 1 and OCTOBER 15

Both meetings start at 7:00 p.m. and will be held in the District's Conference Room.

Contact Terry Reynolds, District Administrator, for more information at 715-884-6694.

Things to Save

Campbell's Labels for Education

Labels from any Campbell's product

Boxtops for Education

The "coupon" located on General Mills products

Milk Caps & Bags

From Kemps, Kwik Trip, Land O'Lakes, Morning Glory

At the beginning of each school year, parents are sent a free and reduced lunch application. The District Food Service area benefits from having more Free and Reduced applications, as the District receives Federal reimbursement for each of the Free and Reduced meals which are served. Just with this fact alone, it is important that parents with children in the district, and who qualify for these lunches, complete these applications each year. However, it is important that you understand these Free and Reduced lunch qualifying applications assist the schools in additional ways as well. Below are a few answers to the questions you may have regarding these applications:

Why is there such a push by school officials to apply for the federal free and reduced lunch program?

Federal (Title 1) and State (SAGE) programs are funded by using a district's free and reduced lunch percentage. For example, a school relatively the same size as the Pittsville School District, but has a Free and Reduced Lunch percentage about 20% higher than Pittsville's, will receive approximately \$229,500 annually from the state in SAGE funding. With the current amount of applications received, Pittsville will receive \$184,500 in SAGE funding from the state. The \$45,000 difference is solely due to the percentage of students qualifying for free and reduced lunch. **Keep in mind that just because a family qualifies for free and reduced lunch does not mean that the family has to take advantage of the program.** But qualifying for free and reduced lunch helps the school district acquire federal and state funds to help offset the expenses of running our programming needs.

Another way the Pittsville School District would benefit from having higher free and reduced lunch rate is its ability to qualify for additional Federal and State grants and E-rate funding which provides discounted rates upon technology related expenses.

If I apply for Free and Reduced Lunch Program is my application kept confidential?

Yes! Parents only need to fill out the application and return it to the administrative office in the district. The application will be reviewed confidentially and a determination will be made on the applicant's eligibility. Parents will be informed as to their eligibility status.

We have enclosed applications within this newsletter. Please consider completing the application if you feel you may qualify. Again, even though you may qualify, you do not have to participate, but will still be assisting the district with their budget needs.

Terry Reynolds

District Administrator, School District of Pittsville

FREE AND REDUCED LUNCH APPLICATION - INSTRUCTIONS FOR APPLYING

If your household gets FOODSHARE, FDPIR, OR W-2 CASH BENEFITS, follow these instructions:

Part 1: List child(ren)'s name, school, grade, and a FoodShare, W-2 cash benefits, or Food Distribution Program on Indian Reservations (FDPIR) case number.

Part 2: Check the appropriate box, if any.

Part 3: Skip this part.

Part 4: Skip this part.

Part 5: Sign the form. A Social Security Number is not necessary.

Part 6: Answer this question if you choose to.

If you are applying for a child that is HOMELESS, MIGRANT or a RUNAWAY, follow these instructions:

Check the appropriate box in **Part 2** and contact John Olig, Senior High School Principal at 715-884-6412.

Fill out application by following instructions for **ALL OTHER HOUSEHOLDS**.

If you are applying for a FOSTER CHILD, follow these instructions:

Part 1: Use a separate application for each foster child. List the child's name, school, and grade.

Part 2: Skip this part.

Part 3: Check the box and list the child's personal use monthly income, if any.

Part 4: Skip this part.

Part 5: Sign the form. A Social Security Number is not necessary.

Part 6: Answer this question if you choose to.

ALL OTHER HOUSEHOLDS, including WIC households, follow these instructions:

Part 1: List each child's name, school, and grade.

Part 2: Check the appropriate box, if any.

Part 3: Skip this part.

Part 4: Follow these instructions to report total household income from last month.

Column 1-Name: List the first and last name of **each** person living in your household, related or not (such as grandparents, other relatives, or friends). You must include yourself and all children living with you. Attach another sheet of paper if you need to.

Column 2 -Gross income last month and how often it was received. Next to each person's name list each type of income received last month, and how often it was received. For example, *Earnings from work:* List the **gross income** each person earned from work. This is not the same as take-home pay. **Gross income is the amount earned before taxes and other deductions.** The amount should be listed on your pay stub, or your boss can tell you. Next to the amount, write how often the person got it (weekly, every other week, twice a month, or monthly). *All other income:* List the amount each person got last month from welfare, child support, alimony, pensions, (second column) pensions, retirement Social Security (third column), and ALL OTHER INCOME SOURCES (fourth column). In the All Other column, include Worker's Compensation, unemployment, strike benefits, Supplemental Security Income (SSI), Veteran's benefits (VA benefits), disability benefits, regular contributions from people who do not live in your household, and ANY OTHER INCOME. Report net income for self-owned business, farm, or rental income. Next to the amount, write how often the person got it. If you are in the Military Housing Privatization Initiative do not include this housing allowance.

Column 3-Check if no income: If the person does not have any income, check the box.

Part 5: An adult household member must sign the form and list his or her Social Security Number, or mark the box if he or she doesn't have one.

Part 6: Answer this question if you choose to.

FREE AND REDUCED PRICE SCHOOL MEALS FAMILY APPLICATION

Part 1. Children in School (Use a separate application for each foster child)

Names of all children in school (First, Middle Initial, Last)	School Name	Grade	FoodShare, W-2 Cash Benefits or Food Distribution Program on Indian Reservations (FDPIR) case # (if any). Skip to Part 5 if you list one of the above.
			Case #
			Case #
			Case #
			Case #
			Case #

DO NOT LIST: Forward or Quest Card numbers; or Medicaid, SSI, W-2 Childcare case numbers. Please fill in Part 4 if you are *not* receiving FoodShare, W-2 cash benefits or Food Distribution Program on Indian Reservations (FDPIR) benefits at this time.

Part 2. Homeless/Migrant/Runaway (For Public Schools Only)

If the child you are applying for is homeless, migrant, or a runaway check the appropriate box and call John Olig, Senior High school Principal at 715-884-6412. Homeless ☐ Migrant ☐ Runaway ☐

Part 3. Foster Child

If this application is for a child who is the legal responsibility of a welfare agency or court, check this box ☐ and then list the amount of the child's personal use monthly income: \$ _____. Skip to Part 5.

Part 4. Total Household Gross Income—You must tell us how much and how often

1. Name (List everyone in household)	2. Gross income and how often it was received <i>Example: \$100/monthly \$100/twice a month \$100/every other week \$100/weekly</i>				3. Check if NO income
	Earnings from work before deductions	Welfare, child support, alimony	Pensions, retirement, Social Security	All Other Income	
(Example) Jane Smith	\$200/weekly	\$150/weekly	\$100/monthly	\$ ____/____	<input type="checkbox"/>
	\$ ____/____	\$ ____/____	\$ ____/____	\$ ____/____	<input type="checkbox"/>
	\$ ____/____	\$ ____/____	\$ ____/____	\$ ____/____	<input type="checkbox"/>
	\$ ____/____	\$ ____/____	\$ ____/____	\$ ____/____	<input type="checkbox"/>
	\$ ____/____	\$ ____/____	\$ ____/____	\$ ____/____	<input type="checkbox"/>
	\$ ____/____	\$ ____/____	\$ ____/____	\$ ____/____	<input type="checkbox"/>
	\$ ____/____	\$ ____/____	\$ ____/____	\$ ____/____	<input type="checkbox"/>
	\$ ____/____	\$ ____/____	\$ ____/____	\$ ____/____	<input type="checkbox"/>
	\$ ____/____	\$ ____/____	\$ ____/____	\$ ____/____	<input type="checkbox"/>

Part 5. Signature and Social Security Number (Adult must sign)

An adult household member must sign the application. If Part 4 is completed, the adult signing the form must also list his or her Social Security Number or mark the "I do not have a Social Security Number" box. (See Privacy Act Statement on the back of this page.)

I certify (promise) that all information on this application is true and that all income is reported. I understand that the school will get Federal funds based on the information I give. I understand that school officials may verify (check) the information. I understand that if I purposely give false information, my children may lose meal benefits, and I may be prosecuted.

Sign here: X _____ Print name: _____ Date: _____

Address: _____ Phone Number: _____

Social Security Number: ____ - ____ - ____ ☐ I do not have a Social Security Number

Part 6. Children's racial and ethnic identities (optional)

Mark one or more racial identities:

- ☐ Asian ☐ American Indian or Alaska Native
☐ White ☐ Native Hawaiian or Other Pacific Islander
☐ Black or African American ☐ Other

Mark one ethnic identity:

- ☐ Hispanic or Latino
☐ Not Hispanic or Latino

Don't fill out this part. This is for school use only.

Annual Income Conversion: Weekly x 52, Every 2 Weeks x 26, Twice A Month x 24 Monthly x 12
 Total Income: _____ Per: ☐ Week, ☐ Every 2 Weeks, ☐ Twice A Month, ☐ Month, ☐ Year Household size: _____
 Categorical Eligibility: _____ Date Withdrawn: _____ Eligibility: Free _____ Reduced _____ Denied _____ Reason: _____
 Temporary: Free _____ Reduced _____ Time Period: _____ (expires after _____ days)
 Determining Official's Signature: _____ Date: _____
 Confirming Official's Signature: _____ Date: _____ Verifying Official's Signature: _____ Date: _____

PITTSVILLE SCHOOL DISTRICT NEWSLETTER

The mission of the Pittsville Public Schools is to enable each student through his/her own efforts and the efforts of parents, educational staff, and the community to be lifelong learners, capable of adapting to change while making a positive contribution in the global community.

School District of Pittsville
5459 Elementary Avenue, Suite 2
Pittsville, WI 54466

NON-PROFIT ORG
US Postage
PAID
PITTSVILLE, WI
PERMIT NO. 20

CURRENT RESIDENT