



February 2010  
March 2010

# Pittsville School District Newsletter

## INSIDE THIS ISSUE

Open Enrollment.....	1
Upcoming Events .....	2
Notes from the Kitchen .....	3
Lunch Menu .....	3
High School News .....	4
Elementary News .....	5
Ag Dept News .....	9
Tech Ed News .....	9
From the Art Dept.....	11
News from the Music Dept .....	12

## WHO DO I CONTACT?

**Terry Reynolds**, District Administrator  
715-884-6694

**John Olig**, Senior High Principal  
715-884-6412

**JoAnn Sondelski**, Elementary Principal  
715-884-2517

## From the Desk of District Administrator Terry Reynolds



The Pittsville School Board on January 11 passed a motion to move forward with a new Strategic Planning process. I'm sure there are a few questions of what exactly this means. So I thought I would try to provide a little insight on this initiative to you all.

We must realize that today's children are growing up in a much different world than which we did. Today's "You Tube" Generation has grown up in a new digital landscape. For most of them, there's never been a time in their lives when computers, digital video, cell phones, video games, the Internet, and all the other digital wonders that increasingly define their (and our) world haven't surrounded them. Constant exposure to digital media has changed the way these "Digital Students" learn, process, interact, and use information. As a result, Digital Students learn and communicate in fundamentally different ways than any other generation. Meanwhile, many of us (educators and parents) struggle as we try to come to terms with the rapidly change landscape of ours.

### Strategic Planning:

**The Purpose:** The Pittsville School Board believes that the Pittsville School District residents want to continue to support high-performing, highly effective, and efficient schools where students are well prepared for their future, no matter what the future may bring.

**The Challenge:** Currently, Wisconsin and our entire nation is dealing with challenging economic times, information is expanding exponentially, and the world is becoming globally flat with technology and virtually connected with the Internet. How will the Pittsville School District respond to these challenges?

**The Charge:** The Pittsville School District wishes to create a collaborative and engaging opportunity to think about how the Pittsville School District will be defined and how Pittsville Schools will serve the students and families of the greater Pittsville area. The charge is helping us to create a new vision and mission to ensure our students' needs are being met in this vastly ever changing world.

In 2025, today's two year olds will graduate from the Pittsville School District. How will we equip them for this digital world of ours? What should we focus our resources on in these difficult economic times which will provide our students with the best education possible? These are just a few of the key questions that our strategic planning process will attempt to answer.

**The Pittsville 2025** initiative will call upon district residents, staff, and administration to be engaged in discussions which will help guide our educational system and prepare for the class of 2025 and beyond. In the coming months, there will be further announcements/invitations for residents to be involved in this very important discussion. Please keep an eye out for future announcements and try to make a commitment to be involved in this very important process!

## School Forest News

Last spring the Pittsville School Forest Committee applied and received a \$5,000 grant to write an educational plan for the Pittsville School Forest. Since then, a committee has been busy writing the Pittsville Education Plan. This plan has created goals and objectives for further outdoor educational opportunities at the school forest for staff and students. The Pittsville School District was recently notified that the Pittsville Education Plan has been approved by the State. With this approval, Pittsville Schools have the opportunity to apply for further School Forest grants to help develop the School Forest area and equipment for student activities. Congratulations and Thank You to Liana Olson, Kris Doering, Karlette Kumm, and Todd Steward for all their hard work and effort in writing this successful education plan. Thank You also to Forester Steve Grant along with committee member Bob Hess for their work in developing the Pittsville School Forest Management plan, which needed to be established as part of the Education Plan. We are very excited about the additional possibilities of outdoor educational opportunities for our students and the further development of our School Forest.

## OPEN ENROLLMENT INFORMATION

The School District of Pittsville is open to families who live outside of our district and we encourage families to consider enrolling their children in our schools through Open Enrollment. The application period for the 2010-2011 school year is February 1-19, 2010. Parents may apply in one of two ways:

- On-line (recommended) at <https://www2.dpi.state.wi.us/OpenEnrollApp>.
- Although the on-line application is recommended, paper applications may be obtained from the Department of Public Instruction or any school district and must be hand-delivered to the nonresident school district during the application period.

Due to Wisconsin DPI guidelines, late applications can not be accepted for any reason. If you would like more information, please contact Deb Zdun at 884-6694.

# Upcoming Events

## FEBRUARY

SUN	MON	TUE	WED	THU	FRI	SAT
	1 FFA District Speaking Contest	2 BB vs Assumption	3	4 ES Math Night, 5:00 pm  GB vs Stratford, Parent's Night	5  BB vs Newman, Parent's Night	6 Youth WR Tournament  HS Play, 7:30 pm
7 HS Play, 1:00 pm	8 School Board Mtg 7:00 JHGB vs Stratford FFA Alumni meeting, 7:00, Ag Room	9 LEAP Program 5 <sup>th</sup> Grade BB at Westfield GB at Assumption	10	11 BB vs Marathon	12 GB vs Newman JHGB vs Port Edwards	13 WR Regionals
14	15 JHGB at Athens	16 BB at Auburndale JHGB vs Auburndale	17	18 GB at Marathon JHGB at Abbotsford	19 BB vs Northland Lutheran, Senior Night	20 WR Sectionals 5-6 BBB Tournament
21 National FFA Week "Lead Out Loud" Theme	22 BB Conference Playoff	23 GB vs Auburndale	24	25 Early Release 12:30 pm  GB at Northland Lutheran WR State	26 NO SCHOOL  WR State	27 PAFA presents Allegro Dance-Ugly Duckling 2:00 pm  WR State
28  **SNOW DATE** PAFA presents Allegro Dance-Ugly Duckling 2:00 pm						

## MARCH

SUN	MON	TUE	WED	THU	FRI	SAT
	1 GB Conference Playoff PTO Book Fair	2 BB Regionals PTO Book Fair	3 PTO Book Fair	4 PTO Book Fair	5 Title I PJ Party 6:30-7:30 PTO Book Fair	6
7 FFA/Vocational Ed Week	8 School Board Mtg 7:00 FFA Alumni meeting, 7:00, Ag Room	9 GB Regionals	10	11 GB Regionals	12	13 GB Regionals
14	15	16 Ski/Snowboard Club presents Jim Wand Hypnotist, 7:00 pm	17	18	19	20 4-H Creative Arts Day
21	22	23	24	25 Begin 4th Quarter  FFA Banquet	26 Early Release 12:30 pm	27
28	29 NO SCHOOL	30 NO SCHOOL	31 NO SCHOOL	APR-1 NO SCHOOL	APR-2 NO SCHOOL	APR-3 Classes resume on April 5 <sup>th</sup> .

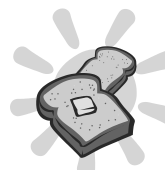
SPRING BREAK

## NOTES FROM THE KITCHEN...

Starting in January, we will be making menu and recipe changes to decrease the amount of sodium and fat as required by the Department of Public Instruction. Areas that will be improved include:

- Whole Grains:** Half of the grains offered in school lunch need to be from whole grains. Our current "whole wheat" bread does not meet this requirement. In looking for a whole grain or whole wheat bread, there are several breads marketed as whole wheat but still have bleached enriched flour as the main ingredient. Some of the planned menu changes are finding a whole grain bread and working it into the menu plan, along with adding whole grain pastas and brown rice. Some menu items that already contain whole grain are our chicken nuggets and pepperoni pizza.
- Total Fat:** The DPI requires that calories from fat be less than 30% of total calories. We are at 30.57%. Saturated fat cannot be more than 10% and we are at 7.99%. We are very close to the standard and with a few minor menu changes; we will reach the standard of less than 30% of total calories from fat.
- Sodium:** We need to work at lowering our sodium. Processed foods are high in sodium and most of the foods we currently serve are canned and processed. Some changes will include - altering portion sizes and recipes to reduce sodium, using fresh or frozen vegetables vs. canned, offering a larger variety of fruit and vegetables, and replacing items high in sodium with items lower in sodium. One example is serving diced cucumbers, broccoli flowers, and garbanzo beans on the salad bar in place of the high in fat and sodium croutons and bacon bits.

We are initiating some of the changes already by adding whole grain pasta to our regular pasta and adding brown rice to our Spanish and broccoli rice. We are also serving a true whole grain bread.



## New Breakfast Program Offered at the Elementary School

National School Breakfast Week is March 8-12. Pittsville Elementary School will be celebrating by kicking off a new breakfast program this week. In place of our a la carte cash breakfast, students will be able to purchase breakfast or milk using the money in their lunch account. The breakfast will cost 60¢. Families that qualify for free or reduced lunch will receive breakfast free.

Once we initiate the breakfast program, the morning milk program will be discontinued. If a student would like milk in the morning, it can be purchased at breakfast for 30¢, but for an additional 30¢ they can have breakfast!

The breakfast items will include milk, fruit or fruit juice, and a main item that will vary daily. If purchased through our present a la carte program, the same breakfast would cost at least \$1.20. We will be sending out a menu and more information in February.

If you have had a change in your family's income, a free and reduced application can be filled out at any time throughout the school year. Please contact Joe Dostal for more information.

### 2009-10 LUNCH PRICES

4K- Gr 4	\$2.10	Adult	\$3.50
Gr 5-8	\$2.50	Reduced	\$ .40
Gr 9-12	\$3.00	Milk	\$ .30

# February Lunch Menu

MONDAY	TUESDAY	WEDNESDAY	THURSDAY	FRIDAY
	Feb-1	Feb-2	Feb-3	Feb-4
HOT PASTA Turkey al a king Carrot coins Chilled fruit Dinner rolls milk	HARD SHELL TACO OR SOFT SHELL Pizza casserole Carrot sticks Fresh bread Shredded cheese Chilled fruit Milk	BREADED CHICKEN on bun Mashed potatoes Fresh bread Chilled fruit Sugar cookies Milk	MINI CORN DOGS Baked beans HOT PASTA Chilled fruit Fresh bread Milk	HOT HAM on a bun BBQ RIB on a bun Tater tot casserole Fresh bread Chilled fruit Sliced cheese Milk
Feb-8	Feb-9	Feb-10	Feb-11	Feb-12
CHEESE QUESADILLA Salad bar Spanish rice Fresh bread Chilled fruit Milk	CHICKEN NUGGETS Baked potatoes Fresh bread Chilled fruit Smart cookies Milk	SPAGHETTI Italian sauce Corn Dinner rolls Chilled fruit Milk	SLOPPY JOE or HAMBURGER on a bun Potato wedges Fresh bread Chilled fruit Sliced cheese Milk	ROAST TURKEY Mashed potatoes Corn Chilled fruit Dinner rolls Bread pudding Milk
Feb-15	Feb-16	Feb-17	Feb-18	Feb-19
NACHOS Cheese sauce Taco meat Corn Fresh bread Chilled fruit Salad bar Milk	SUB SANDWICH Chicken noodle soup Fresh bread Carrot sticks Chilled fruit Milk	CHEESE FRIES HAM & CHEESE KAISER Broccoli rice Fresh bread Salad bar Chilled fruit Milk	FISH SQUARE on a bun or HAMBURGER on a bun French fries Fresh bread Chilled fruit Relish sticks & dip Sliced cheese Milk	FRENCH TOAST STICKS Little smokies Fresh bread Juice Chilled fruit Milk
Feb-22	Feb-23	Feb-24	Feb-25	Feb-26
PEPPERONI PIZZA TUNA SALAD KAISER Fresh bread Salad bar Pasta salad Chilled fruit Milk	SPAGHETTI Italian sauce corn dinner rolls chilled fruit milk	CHICKEN NUGGETS Mashed potatoes Fresh bread Chilled fruit Smart cookies Milk	PIZZA DIPPERS Salad bar Fresh bread Chilled fruit Pasta salad Milk	NO SCHOOL



# PITTSVILLE HIGH SCHOOL NEWS

It is hard to believe with we have passed the half way point of another school year. With the end of the first semester, the students received another column of grades on their transcripts. The semester grades are the only grades entered on the high school transcript. These are the grades which will be passed on to future employers and prospective universities as the students prepare to leave high school. When future employers review transcripts, they usually are looking at more than grades. One of the first places that employers look is the line which speaks about attendance. Some employers are more concerned with attendance than grades. It is hard to work with an employee who does not come to work.

I know this time of year students are concerned about their grade point average but their attendance can play a critical role as employers make hiring decisions about the jobs available after high school or even summer work. Attendance at school can make a big difference when a prospective employer makes a decision about who he or she is going to hire. As we enter the second semester, I want to encourage students and parents to have a positive trend in terms of attendance. Employers notice the student who missed a great deal of school in the first semester but show improved attendance in the second semester. This is a portion of the transcript which can make a big difference, but is often overlooked by students and parents.

Next, I want to take a moment to talk about scheduling for the 2010/2011 school year. The scheduling process begins in early February when students make their initial course selections. Based on student interest from their initial choices, classes are offered for the schedule. I encourage parents to talk to their son or daughter about their choice of classes. Parents want to discuss the child's future plans. This is a great way to have a discussion with your child and ensure your child is making good choices. As a high school principal, the biggest error I see in the scheduling process is the selection of classes by a student based on the class schedule of his or her friends. Schedules often change at semester because friends changed earlier in the year. Ideally, class selections should be based on potential areas of interest and preparation for life after high school.

Finally, I ask parents to encourage their children to try out different areas of the high school curriculum. It is great to see students involved in the band and chorus. These types of classes help students develop creativity. I like to see girls in the woodworking and welding classes as well as boys taking child development classes. In many cases, these are lifelong skills which can impact career choices. Woodworking could give a future homeowner the skills needed to make repairs in a home while Child Development can assist the future parent by developing parenting skills. Another class I would like to see students select is General Business Personal Finance. There is a need for students to learn the skills needed to make prudent financial decisions after high school. Again, exposure to these areas will assist students in seeing the variety of careers available to the student while teaching skills which can be useful in their home as future parents.

I hope my thoughts help to build a better tomorrow for our students. I also thank you for your continued interest in our school and more importantly our young people.

John Olig, Senior High School Principal

## English Classes are Reading Up a Storm!

Harper Lee's Pulitzer Prize winning novel is the focus of English 10. Prior to reading *To Kill a Mockingbird* students were asked to complete an anticipation guide that addressed many of the themes and situations that we will be reading including: The Great Depression, the Jim Crow South, and 'learning to walk in someone else's skin'. Students have a Study Guide and vocabulary work to be completed for each chapter as well as daily discussions. By the time the sophomores finish *To Kill a Mockingbird*, they will understand why this coming-of-age-story is a classic.

The English 11 students are just completing a Contemporary Choice novel. Students read either *Twisted* by Laurie Halse Anderson or *The Lovely Bones* by Alice Sebold. Both books have teenage protagonists who many students can identify with. Students started reading their choice book, which they've had to share with another student, on January 4th and complete daily "Chapter Notes" each day. A monstrous Punctuation Review Packet compliments this self-paced unit.

F.Scott Fitzgerald classic, *The Great Gatsby* is being read in Advanced Placement Literature and Composition. Set on the east coast of the United States, this novel explores "The Roaring 20's" and "The Jazz Age" prior to the collapse of the stock market on Black Friday. Although it has taken a few chapters, most students are enjoying the author's use of imagery and figurative language. We've discovered that Fitzgerald loved using polysyndetons in this novel. *The Great Gatsby* is one of many novels that is used on the College Board's Advanced Placement English Literature test each May. Earning Advanced Placement Credits is a great way to get ahead in college before you even start! See Ms. Freedlund or Mrs. Backus for more information.

## Pittsville FFA Banquet

March 25<sup>th</sup> 7:00 - 9:00 p.m.

All current and retired farmers and agriculture related people, please come as our guest to help us celebrate the successes of year.

The **Pittsville Forensic Team** is gearing up for a new season of speech! On February 16<sup>th</sup>, Pittsville will be hosting our 23<sup>rd</sup> Annual Forensics Festival starting at 3:30 p.m. There is still time for students to join. Please see Ms. Freedlund or Mr. Simonds for more information.

The **Landscape and Design Class** is looking for spring landscaping projects. You provide the material; we provide the ideas and labor. The projects must be within walking distance of the school.



Dear Parents & Students,

When we think of education and school, we often think of teaching of the subjects like reading, writing, and arithmetic. However, school is really about a whole lot more. The ultimate goal of education is to prepare children for life. This preparation not only comes from teaching the subjects but also from opportunities and activities that help build confidence, relationships, esteem, and social skills. We have had several activities this past semester that allowed students to build some of these skills---and we had some fun doing it too!

No doubt, if your child has been a part of the Golden Awards' Panther Diner, you have heard about the experience. It has been quite fun for all of us to offer the students an opportunity to experience some fine dining!

The basic concept behind our Golden Awards program is to encourage the students to work together as a team toward a common goal---that is, acquiring the traveling trophy for certain good behaviors. One of the behaviors we have tried to acknowledge every month includes completing and handing in assignments when they are due. Unfortunately, we haven't had many opportunities to hand this award out to a class, because we are seeing more and more late assignments as the year progresses. We all know that education prepares children for life. Requiring that students complete their work on time, ultimately prepares them for the demands of meeting deadlines as an adult.

As parents, you can help us in this endeavor by providing your children time each night to complete their homework. Every student in grades 3-8 have been given a planner that should be coming home each night. We ask that you take a look at this planner and note assignments that your student has received. If you take a couple of seconds to follow through with this and require that your child complete the work, this will help us help your child become prepared for the demands of life.

We all know how important you are to our educational efforts. In fact, we are humble enough to know that we could not do our work well without your support. So, as we begin our second semester of the 2009-10 school year, let's all make a resolution to work together as a team for the benefit of the children.

We had a fantastic first semester. I am extremely proud of our students at Pittsville Elementary School. I look forward to being just as proud of them throughout the second semester. Happy New Year!

Sincerely,

Mrs. Sondelski, Elementary Principal

## CHILD DEVELOPMENT DAYS SCREENING

Thursday, February 18<sup>th</sup> from 3:30-7:00 pm

Friday, February 19<sup>th</sup> from 8:00-10:30 am

The screening will take place in the 4K/EC classrooms at the Elementary school. The screening is for children who will be turning 3 years old on or before June 1, 2010 thru age 5 and reside in the Pittsville School District. Children who currently attend the Early Childhood or 4YK programs do not need to be screened. The screening will provide parents with an opportunity to learn more about their child's growth and development. Potential delays can be caught and appropriate interventions begun early.

Please call the Pittsville Elementary office at 884-2517 to register your child for Child Development Days Screening.

## Pittsville Elementary School KINDERGARTEN REGISTRATION

Registration for both 4-year old and 5-year old kindergarten classes for the 2010-2011 school year will be held February 1-12 from 8:00-3:00 at the Pittsville Elementary School Office. The registration process takes approximately 15 minutes.

This registration is for incoming 4-K students and only those 5-K students that did not attend the 4-K program this school year.

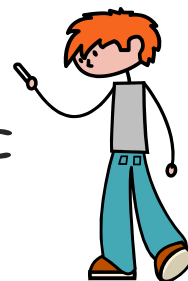
Children need not attend this registration. It is designed for parents to enroll their child in Kindergarten. Your child's birth certificate is required at registration.

Incoming students must be 4 (4-K program) or 5 (5-K program) on or before September 1, 2010 for enrollment in the 2010-2011 school year.

If you have any questions, please contact Karen Garrels at Pittsville Public Schools, at 715/884-2517.

Join us for

Math  
Night



February 4th  
5:00 to 7:00 pm

*Play addition Twister!*

*Build 3-D solids with  
toothpicks and marshmallows!*

*Make symmetrical Valentine hearts!*

*Play math games from the Internet in the  
Computer Lab!*

These are just a few of the many hands-on math activities you will have the opportunity to do! A complimentary meal will be provided thanks to our wonderful PTO! Please call the elementary office if you are interested in coming to this fun event!!

# PES presents....

## Snow White and the Seven Dwarfs of the Black Forest and The Trial of Hansel and Gretel

Seventy students in grades 3-8 worked hard to create this theatrical presentation. The students started their show with a 20 minute vignette that relied on audience participation to decide the fate of Hansel, Gretel, Wanda Witch and Becky Bird. After this humorous presentation with an innocent verdict for Hansel and Gretel, the audience was treated to the main performance. This play provided all the characters you love: Snow White; the seven funny little dwarfs; the absent-minded king, King Absent Minded; Bella, his new wife, part queen, part witch, but far more funny than frightening; her servant, the frantic Maid Dim Witty; and the handsome and conceited Prince Goodhearted. There were some new characters, too, created for this dramatic version: Snow White's animal friends and the fascinating Miss Time, whose father, Father Time, started the whole Once Upon a Time business. The students worked diligently to learn their lines and provide a crowd-pleasing performance. The performance was held on November 19 and 20.



### The Trial of Hansel and Gretel

Prosecutor - Nicole Guden  
Defense Attorney - Jaimee Arnold  
Becky Bird - Amber Buckholz  
Gretel - Kari Beckman  
Judge - Haley Kumm  
Clerk of Courts - Monte Theil  
Hansel - Martin Schwanebeck  
Elizabeth Schultz- Narrator #1  
Bethany Strenn - Narrator #2  
Wanda Witch - Jenna Hughes



**DIRECTOR**  
Jodie Sanken

**ASSISTANT DIRECTOR**  
Sara Janz

### Snow White and the Seven Dwarfs of the Black Forest

Time - Maisie Cramer  
King - Cedric Neve  
Snow White - Hannah Downs  
Bunny - Lydia Sanken  
Bonnie - Morgan Dupee  
Primrose - Alissa Korslin  
Tillie - Anna Braun  
Maid Dim Witty - Morgan Frost  
Queen Bella - Jenna Sanken  
Scully - Scott Schooley  
Hoot - Lexi Dupee  
Hickory - Sophia Schwanebeck  
Dickory - Breanna Kumm  
Dock - Miranda Coulthard  
Weepy - Adrianna Zickert  
Curly - Samantha Schooley  
Echo Echo - Katie Delaney  
Little Banjo - Laney Garrels  
The Prince - Brad Wesely  
The Mirror - Brooke Zdu  
Trees - Anna Parker  
Amanda Piotrowski  
Amanda Ortnr  
Sarah Downs  
Mary Schooley  
Leah Kumm  
Amber Guden  
Anastasia Randall  
Creatures - Brittany Kuzma  
Sierra Braun  
Ruby Dietz  
Paeton Scholzen  
Kiyanna Schooley  
Martina Schultz  
Sara Minor  
Mackayla Wayerski  
Crows - Colleen Lassa  
Harley Metcalfe  
Stephanie Riedel

**Stage Crew:** Audrey Meis, Sarah Schmitz, Alex Williamson, Henry Myers, Evan Manlick, Daniel Piotrowski, Anna Johnson, Calvin Amundson, Tim Zogleman, Connor Coyle, Dylan Grossbier, Ryan Zickert, Tyler Schooley, Brandon Droste, Cade Clark, Karl Durrant, Jesse Poppy, Isaac Kissner, Parker Blomberg, Hailey Metcalfe, Jenna Ginter







### 4 YEAR OLD KINDERGARTEN

The 4K classes have been working on identifying and creating AB patterns. We have practiced making patterns using a variety of materials and manipulatives, including the use of the Smart Board. The children each took a turn dragging shapes to create an AB pattern of their own.

## PTO and Title 1 Pajama Party

The PTO and Title 1 program are sponsoring their annual Pajama Reading Night on Friday, March 5, 2010, from 6:30-7:30 p.m. with cookies and milk to follow. This event is for preK-3<sup>rd</sup> grade students. The PTO Book Fair will also be available in the community room that night until 8:00 p.m. Children must attend with an adult.

We will be sending slips home with school children at a later date. These help us to know how many cookies and milk we need to order.

If anyone is interested in reading for a 10 minute block of time, please contact Ms. Schooley at schoocyn@pittsville.k12.wi.us or by phoning 884-2517 ext. 119 and leaving a message. All community members are welcome to read.

We look forward to seeing you there.



### Join us for Jump Rope For Heart!

This year, the program will be run as a volunteer after-school fun activity night. The American Heart Association is a wonderful program helping many. Participation in this fundraiser is not mandatory. Let's all jump for exercise and have fun!

Jump Rope For Heart will be held on February 10<sup>th</sup> at 3:00 pm until 5:00 pm.

Let's help our children stay healthy and be Heart Heroes!

Tammie, School Health Director

*For the safety of our children, we ask that your child not go door-to-door or ask*



## Primary Holiday Program



## GOLDEN AWARDS

### NOVEMBER WINNERS

Panther Diner—Mrs. Kuehn's 2<sup>nd</sup> Grade  
Golden Book Award—Ms. Hedstrom's 7<sup>th</sup> Grade  
Golden Dustpan & Broom Award—Mrs. Kroening's Music Rm  
Golden Slipper Award—Mr. Schultz's 6<sup>th</sup> Grade  
Golden Slide Award—Multi-Age Classroom

### DECEMBER WINNERS

Panther Diner—Mr. Sanken's Kindergarten  
Golden Pencil Award—Mr. Schultz's 6<sup>th</sup> Grade Science  
Golden Slipper—Ms. Hartwig's 4<sup>th</sup> Grade  
Golden Table—Mrs. Coon's 6B Class  
Golden Spoon—Mrs. Kuehn's 2nd Grade  
Golden Slide—Mrs. Denniston's 4<sup>th</sup> Grade  
Golden Present—Mr. Downing's 5<sup>th</sup> Grade  
Golden Book—Mrs. Brux's 6<sup>th</sup> Grade  
Golden Dustpan/Broom—Mrs. Niehaus's Kindergarten



Mr. Sanken's Kgn class was drawn to eat at the Panther Diner for the Golden Awards in December. The kids had a great meal served by Mrs. Sondelski and Mrs. Bisek.

## The Pittsville Drama Club Presents...

### 'TIL DEATH DO US PART

You are invited to the most offbeat wedding of the season, where murder takes center stage and all the guests are suspects. Neither the groom's parents nor the bride's former boyfriend want the marriage to happen. The family lawyer has a little something up his sleeve and it might involve an enigmatic guest who dies mysteriously before revealing who she really is. When the lawyer is also murdered, amateur sleuth Miss Peabody conducts an investigation punctuated by the traditional wedding events in which the audience can also participate, such as throwing the bouquet, cutting of the cake, and dancing. But each moment brings Miss Peabody a step closer to the identity of a ruthless killer consumed by greed. With the audience's help in finding clues during intermission, all but the killer will live happily ever after.

By the time the mystery is solved, 22 actors will have put in countless of hours of practice.

Come join in the celebration! Performances will be Saturday, February 6<sup>th</sup> at 7:30 pm and Sunday, February 7<sup>th</sup> at 1:00 pm. Tickets are \$5 for adults and \$4 for students.



### THINGS TO SAVE

Please help us throughout the school year by collecting the following:

**Campbell's Labels for Education** – labels from any Campbell's product.

**Boxtops for Education** – the "coupon" located on General Mills products.

**Milk Caps & Bags** – from Kemps, Kwik Trip, Land O'Lakes, Morning Glory.

We also participate in **rebate programs from Target and Pick 'n Save**. To participate in the "We Care" program at Pick 'n Save, simply list our school's account number (617190) on your Advantage Plus Savers Club Card application. Each time you present your card at the checkout, a donation from that purchase is added to our account. There is no cost to participate in either rebate program.

### VOLUNTEER – WE NEED YOUR HELP

Parent support is vital to the overall effectiveness of our school programs. The use of school volunteers can help strengthen existing programs or introduce new programs.

All parents and community members are encouraged to become volunteers. The only requirement is to complete a Volunteer Form and have an interest in the education of children. Please contact Mrs. Sondelski if you would like to volunteer.

### HAVE YOU MOVED?

It is important that you provide the elementary office with any changes to your address, telephone number, or e-mail address. Also, be sure that you update this information in Instant Alert as well.

If you have any changes to your emergency contacts, please let us know that also. Having this information up-to-date saves us precious minutes in the event of illness or emergency.

## PHS Ho-Ang-Ho News

The 2010 Ho-Ang-Ho high school yearbook staff would like to invite all parents and students to submit their pictures for possible use in this year's book. You can submit your pictures online. You can access the upload site by visiting Carmen Kumm's web page from the school's website. You will need the user id which is 400008240 and the password which is phs#1. We encourage anyone that has any neat or interesting picture to please submit it for publication. Thank you so much for your photos!

The staff is currently working on the senior pages. There was a note sent home with semester report cards requesting Baby Ads for the seniors. Parents of seniors are encouraged to submit those by Feb 28<sup>th</sup>. There is a \$5 charge for those pictures.

In addition, the yearbook staff sells ads for page sponsorship to anyone wanting to do so. We would like to encourage local businesses that do not have offices that we can visit to please give us a call if they'd like to sponsor a page in our yearbook. Page sponsorship is \$25; your name is placed on the sponsored page and again in the index of sponsors.

The yearbooks will go on sale in February, watch for announcements and don't forget to submit your photos.

## PLEASE DONATE

On January 12<sup>th</sup>, the people of Haiti experienced an earthquake that has put many people in need of the basic necessities of life: water, food and shelter. The Pittsville Junior High Student Council is organizing a community-wide money collection for the people of Haiti. Collection jars can be found at the elementary and high school offices and at Baum's Mercantile and Cenex. The students have designated UNICEF as the recipients as they help children and their families. This is the same organization that was donated to a few years back during for Southeast Asian tsunami victims. Thank you for all of your help, remember that every dollar counts.

## PHS Pom Pon Dance Clinic

**Feb 4<sup>th</sup> & 5<sup>th</sup>**

**For Girls 4Kgn through 8<sup>th</sup> grade**

**THURSDAY FEB 4<sup>th</sup>: Practice from 3-5:00pm**  
(Stay for Math night from 5-7:00pm!)

**FRIDAY FEB 5<sup>th</sup>: Practice from 3-5:00pm**  
**Return at 7:30pm to perform at half-time**  
**for the basketball game.**





# Agriculture Education and Pittsville FFA News and Notes.....

The Pittsville Agriculture Education and FFA have once again had a busy few months. In December, the FFA and other Pittsville High School Organizations joined hands to have a food drive competition for the Pittsville Food Pantry. The number of non-perishable items totaled 357; the senior class was the winner and will receive free milk from the FFA for their efforts. The FFA now has another busy month. FFA Officers Zac Hoffarth, Kaila Pralle, Wendy Cullen, and Josh Robus are applying for State FFA Degrees. The State FFA Degree is an honor bestowed to members that rank in the top 3% of all the 15,500 members in the state. To qualify for this award, our members must be active in the organization, complete 20 hours of community service, and be involved in an agriculturally related activities throughout their high school careers. In the past eleven years, Pittsville has had 31 members receive their State Degree at the FFA State Convention in Madison in June. February 1, 2010 the Pittsville FFA will be hosting District Speaking Contest from 3:30-7:00 PM, students from ten area schools will be competing to go onto the Sectional Contest held in March. The speaking contests include Quiz Bowl, Extemporaneous Speaking, Prepared, Creed, Interview, Parliamentary Procedure, and Discussion Meet. The public is welcome to watch as well and we are still looking for a few judges.

The Agriculture Education Department has been taking students and exploring the agriculture of Pittsville. Roger Harris from Jeremiah's Crossing came and discussed his horse ranch south of town. He explained how his ranch is reaching out to children with special needs throughout the state by offering free horse rides to children that may not have a chance to ever ride a horse. There are approximately fifteen students from Pittsville High School currently volunteering helping Mr. Harris and the special needs students. FFA member and current student Alesha Osgood came in and spoke about her dairy goat operation she runs at her family's farm on Polish Road. Alesha spoke to our Large Animal Science Class about how she started in her dairy goat enterprise four years ago. At the height of her operation, she has had over 100 dairy goats on her farm and currently has 24 goats plus a few kids. She buys and sells dairy goats but does not have time to milk them. One interesting fact was that dairy goats are the number one milk producing animal in the world, it doesn't produce the most milk, but it is most milked animal in the world.

Nancy and Ray Stauner spoke to our class about their Elk Farm south of Pittsville. This is the fourth year we have visited. They currently have eight cows that successfully had seven bulls this past spring. The class learned the trials and tribulations of raising elk. Some interesting points were Nancy is an artist and Ray is a taxidermist, that the elk are really hard on the fence with their antlers, antlers fall off while horns do not, next year they will remove the antlers to protect their animals from getting hurt, elk meat is a very healthy meat with low cholesterol, elk go into rut from October through mid-November, during that time Ray and Nancy will not go into the pen because of the aggressiveness of the bull.

The eighth grade students are completing their tractor safety unit. This quarter's tractor safety certified students include Ashley Brookhart, Stormy Conrad, Cierra Coyle, Morgan Frost, Jessica Gauger, Tom Hale, James Lassa, Curtis Park, Sarah Peterson, Damian Poehnelt, Brendon Robinson and Alex Williamson. I would like to thank Power Pac of Marshfield for letting us use one of their tractors for the driving part and Josh Calaway for taking it back to Power Pac.

Finally, the badger that was donated to the school and agriculture department is being completed by local taxidermist Dan Luther. Look for it in the display sometime next month. The taxidermy materials are being covered the Pittsville VFW.



Luke Kronstedt, Nancy Stauner, and Arron Peasle with set of antlers from Stauners Elk Farm.

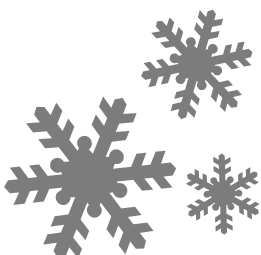
Natalie Sparacio interviewing Ethan Kronstedt when the Cranberry Science Class was Channel 9 Classroom of the week.

## Tech Ed News



The Pittsville Technology Education classes took a field trip to FABTECH in Oshkosh this past December. The students learned all sorts of exciting things about what it takes to become a student of FABTECH and what students can do once they graduate. For going, the students were also awarded with a free lunch, a check from FABCO for \$250 and a CAT skid steer engine!

Students have also been really busy finishing up all of their projects in Woods and Welding. They should be really proud what they have been producing this year. Here are a few. The first is Dallas Oates with her nice Shaker style table and the second one is Dustin Metcalfe with his Milwaukee Brewer table.



## Author Alan St. Jean is coming to visit Pittsville Elementary School on February 5th

Mr. St. Jean is a writer of books for young people and also a songwriter and performer. His passions are teaching reading and writing and his presentations are designed to encourage students to do both. He will give two presentations for our students; Grades 3-8 at 8:10-9:10 am and grades K-2 at 9:45-10:35 am. Some of his books will be for sale, and if you would like to purchase some there will be book-signing time from 9:15-9:40 am and 10:40-11:10 am. Each book is \$15.00.

**Big Fella** - With Audio CD!

**Spooky Mooky** - With Audio CD!

**Alyssa and the Spider** - With Audio CD!

**Aidan of Oren, Aidan of Oren, The Elf Princess, Aidan of Oren, Valley of the Dragons**

You can learn more about this interesting author, his books and his music at [www.alanstjean.com](http://www.alanstjean.com). If you would like more information about his visit or to pre-order books, please contact Mrs. Young at the Elementary School LMC.



## Snowboard Club...

### SNOWBOARD TEACHERS

Pittsville High School students are teaching snowboarding at Bruce Mound. In order to teach snowboarding, students learn how to teach from a qualified instructor. Students teach the basic concept of turning and stopping, how to ride the T-bar, and sometimes carving. They have taught children as young as 5 years old up to adults. Bruce Mound sets the price for lessons; Private-\$25.00, Semi-Private (2 people)-\$20.00, Group (3 or more people)-\$15.00. A lesson takes about 1 to 1 ½ hours. Bruce Mound also has a tubing hill as well as a chair lift to the upper hill. You can go to the Friends of Bruce Mound website for more information [www.fobmi.org](http://www.fobmi.org).

### SNOWBOARD TRIP INFORMATION

The high school and junior high snowboard club have made a few trips so far this year. On December 12, the club went to Mount LaCrosse for our first trip. We were a little nervous about no snow, but then as luck would have it, it snowed a couple days before our trip. So the 42 snowboarders were in good spirits. On January 16, we went to Granite Peak in Wausau for a Saturday evening. Some of the snowboarders had never been on the hill at night so it was a real treat to see the city lights of Wausau from the top of the hill. Our next trip for high school students only will be to Indianhead in Upper Michigan. We will leave early Friday morning, January 22, staying right on the hill until Sunday evening, January 24. The next trip for high school and junior high will be the Friday we have off school, February 26. We will travel to Bruce Mound for the day. If there are any home school groups who would like to join us for the day they can call Pam at 884-6412 for more information. Snowboard instructors will be available at no cost to Pittsville residents on that day. Our last trip will be to Nordic Mountain on Sunday, February 28. We invite anyone who would like to learn how to snowboard to call the high school for trip or instructor information.

Pictured below: Mason Frost, Summer Wilke, Amber Guden, Maggie Young, Dallas Oates, Dakota Frost.

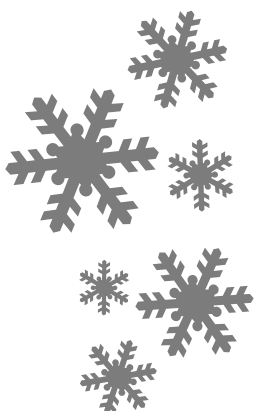


# From the Art Department...



## Pittsville Art Show Award Winners

Ribbon	Student	Grade	Art Project
School Board's Choice Award	Autumn Lutz	10	Feather Painting
Superintendent's Choice Award	Katelyn Drackley	11	Ceramic Architecture Structure
Principal's Choice Award	Ashley Guden	12	Wheel Thrown Ceramic Bowl
	Hirohide Kodama	11	Portrait Paintings
Secretary's' Choice Award	Mindy Bakken	11	Ceramic Architecture Structure
	Landyn Wayerski	2	O'Keeffe Flower Painting
PTO Choice Award	Courtany Schwanebeck	5	Stamp Drawing
Kitchen's Choice Award	Hannah Rahm	12	Ocean Oil Painting
Custodian's Choice Award	Sarah Downs	3	Birch Trees Painting
Visiting Artist's Choice Award	Katelyn Drackley	11	Ceramic Ocarina
	Hirohide Kodama	11	Mosaic Teacher Portrait
	Anna Schwanebeck	10	Abstract Painting
	Marie Topping	11	Ceramic Architecture Structure
Viewers' Choice Award	Hannah Rahm	12	Ocean Oil Painting
Teachers' Choice Award	Olivia Dupee	K	Picasso's Posies
	Bobbie Sue Arnold	12	Musical Painting
	Henry Myer	4	Shrink Art Mask
	Jordan Denniston	K	Van Gogh's Sunflowers
	JJ	K	Van Gogh's Sunflowers
	Kai Cafilich	1	Cat on a Mat
	Eli Fox	MA	Ceramic Cat
	Reese Bakken	7	Found Object Ceramic Box
	Thomas Braun	7	Dragonfly Stepping Stone
	Shelby Freelund	10	Ballerina Drawing
	Ruby Dietz	5	Stamp Drawing
	Laney Garrels	MA	Plant Sun Print
	Mikayla Bowden	2	Ceramic Leaf
	Austin Riedel	2	Ceramic Leaf
	Elias Larson	4	Van Gogh's Starry Night
	Ashlee Zakrzewski	6	Pop Art Banana Drawing
	Shelby Freedlund	10	Feather Painting
	Kaitlyn Hahn	10	Feather Painting
	Hirohide Kodama	11	Feather Painting
	Sarah Downs	3	Monster
	Paeton Scholzen	3	Pond Study Painting
	Mason Kleifgen	2	Symmetrical Insect Pastel Drawing
	Arianna Perschke	5	Grape Painting
	Tiffany Marshall	12	Ceramic Architecture Structure
	Kayla Larson	6	Pop Art Hairclip Painting





# News from the Music Department...



7/8th Grade Band



6th Grade Chorus

## UPCOMING MUSIC EVENTS

- Mar 23** - Solo/Ensemble at Athens
- Apr 13** - Large Group Choir at Auburndale
- Apr 20** - Large Group Band at Auburndale
- May 3** - HS Spring Concert, 8:00 pm
- May 11** - 6-8 Spring Concert – 1:45, 7:30 pm
- Jun 5** - HS Band Marshfield Dairy Fest Parade, 11:00 am
- Jul 4** - HS Band Pittsville 4th of July Parade. 12:00



High School Swing Choir



High School Chorus



High School Band

The students of the Pittsville Junior High and High School Music Department have begun the process of selecting and practicing solo/ensemble music. This activity is optional for all band and choir members. The students have from now until Tuesday, March 23 to practice and perfect their selections. Much of this practicing is done independently. Instrumentalists practice on their own and then have lessons with Mrs. Kroening during or after school. The vocalists practice at home with cassette tapes and then work with Mrs. Gronski during or after school. Some of the students also will be performing with a piano accompaniment as the Festival day grows closer. This year, Pittsville will travel to Athens to participate in the Marawood Solo/Ensemble Festival. That day the students will perform their selections for a judge and be rated according to points on a rubric. Students participating in Class A may earn a chance to perform at the State Solo/Ensemble Festival at UW-Stevens Point in early May.

This year, the Pittsville Choirs will participate in the Marawood Large Group Choir Festival at Auburndale on Tuesday, April 13. The Bands will perform one week later on Tuesday, April 20 also at Auburndale. Parents and community members are welcome to attend any and all of these events.

## Jim Wand-Hypnotist

**March 16, 2010 - 7:00 PM**  
**Pittsville Auditorium**  
**Tickets: \$8.00**

**Sponsored by PHS Ski/Snowboard**



**Allegro Regional Dance Theater**  
**Peter & the Wolf & the Ugly Duckling**

**February 27, 2010**  
**(Snow Date Sunday, February 28)**

Allegro is best known for its ballet bedtime stories, popular children's stories brought to the stage with dance, music and storytelling. Elaborate scenery, humor, colorful costumes and playful choreography will illuminate these well-known stories. Children of all ages are encouraged to come dressed in pajamas to see these bedtime stories come to life. Learn more at [www.allegrodance.org](http://www.allegrodance.org)

Sponsored in part by: Lake Dexter Drive-In, Gerald & Rhonda Minor, Mid-Towne Dental, Pittsville Therapy Services Inc.

**Show time: 2:00 pm**  
**Tickets: Adult \$10 Senior \$8 Student \$5**

## LOW LUNCH BALANCES

Students whose lunch accounts are below six meals will be notified weekly using the Pittsville School District Instant Alert System. The notice explains that the student's funds are running low and money should be added as soon as possible.

If an account gets below zero, a notice will be sent out through the instant alert system stating if the amount due is not paid in three working days, your child will not longer be able to participate in the morning milk program and/or lunch program. If no money is received, a note will go home with the child explaining the account is closed and Pittsville Schools will no longer be providing school lunch or milk. It is then the parent's responsibility to provide their child with a lunch from home. Once money is added, your child may again participate in the school lunch and milk program.

When sending in a payment, please include the name of your child and account number. If your family has more than one student attending the district, be sure to list the names and account numbers of all the students you wish the money to be distributed. When distributing money (unless otherwise directed), family accounts will be "evened out" so all the students in one family will have about the same amount of money.

Here are a few tips to insure your child's food service account is up-to-date and in good standing.

- Check with your answering machines, e-mails to see if your family received an instant alert message concerning a low lunch balance.
- If you received a notice, please send payment as soon as possible. Remember – your child has only six or less purchases left.
- When sending in a payment, please include each student's name and account number.

If you have any questions about your account, please contact Joe Dostal at 715-884-2517.

## STI InformationNOW for Parents

STI InformationNOW is a free web-based student information application that gives parents/guardians and students on line access to grades, assignments, attendance, schedules, emergency information, and more! If you have access to a computer, you can now monitor your child's assignments and grades on a regular basis. It's easy to use and we think you'll find this an invaluable tool!

To obtain a parent/guardian **LOGIN** to *InformationNOW*, please contact the school. Users must receive a user name and password, as well as the Web site URL, to access the program.

- To log in, open a Web browser window.
- Go to the Web site URL <https://infonow.cesa10.k12.wi.us/pittsville>
- Enter the *User Name* and *Password*.
- Click **Login**.
  - The first time a user logs in, it is necessary to reset the password for security purposes.
  - If necessary, enter the old password. Then enter the new password and retype it in the space provided. Click **OK** to save the changes.

Note: If the user has forgotten the password and has an e-mail address on file with the school, click the **Forgot your password?** link. Enter the user name and the last four digits of the Social Security Number on file. The password will be e-mailed to the user's account. If further assistance is needed, please contact the school.

### Home Page

The *home page* will initially display, listing all announcements for the school and/or district. The user may also use the *Logout* option in the upper right hand corner to exit *InformationNOW*. It is recommended that users exit *InformationNOW* when finished accessing the program to protect confidential information, such as Social Security Numbers as well as demographic, discipline and grade information.

### School Calendar

To view the school calendar, click the **School Calendar** link at left. By default, the events and attendance days will display for the current school/academic session and month. Non-attendance days appear in gray. Events appear as a blue link. Regular attendance days appear with the type of day.

### Student Information

Click **Student Information** to view student data. All students to which the current user is assigned as custodian will display. Click the name of the student to view. Access various tabs of information for the selected student including *Grades*, *Schedule*, *Attendance*, *Discipline* and basic *Demographic* data.

### Reports

- **Report Card**: To view the student's report card information, click the **Report Card** link at left. Select the grading period and click **View Report**. Click to **Open** or **Save** the report.
- **Unofficial Transcript**: To view the student's unofficial transcript grade information, click the **Unofficial Transcript** link at left. Click to **Open** or **Save** the report.

If you have questions, difficulties, or need a new password, contact Karen Garrels or Tammie Cramer (884-2517) at the Elementary School or Pam Kumm (884-6412) at the High School. Troubleshooting Information is also available at the district's website at [www.pittsville.k12.wi.us](http://www.pittsville.k12.wi.us).

## INSTANT ALERT FOR SCHOOLS

Instant Alert for Schools is an essential tool for notification and communication. Within minutes of an emergency, school officials can use Instant Alert to deliver a single, clear message to the students' parents or guardians by telephone, cell phone, e-mail, pager or PDA in any combination. Instant Alert can also be used to notify you of a school closing due to inclement weather. It's an equally effective way to keep you informed of everyday activities, such as event times and locations as well as schedule changes. Keeping parents informed and involved helps to assure student safety and improve student success.

The system can be found through a link on the district website or at <https://instantalert.honeywell.com>. We encourage you to take advantage of this opportunity, as we will be utilizing this system for much of our school-to-home communication.

If you need assistance with your profile, please go to <https://instantalert.honeywell.com> and click on the **Help Request** link on the lower right hand side of the page, or contact the school at 884-2517 (elementary office), 884-6412 (High School office) or the district office at 884-6694.

## Cafe Prepay

To help simplify payment of school lunch fees, Pittsville School District has enrolled in an internet-based service called Café Prepay. This service is a website where you can pay for your child's lunch account fees using your Visa, MasterCard, Discover or American Express, plus a small processing fee (approximately \$2.50 per transaction) charged by your credit card company. Participation in this service is voluntary; you may enroll at any time.

Café Prepay also enables you to view your student's participation report, which means you can monitor your child's spending and see exactly what he's eating each day (via the Participation Report link).

You can find a link to the Café Prepay website on the school district's website at <http://www.pittsville.k12.wi.us/>. If you have questions, please visit <http://www.pay4lunch.com/faq.aspx> or call 1-866-642-9990. For questions about your child's account balances or other food service questions please call the school district food service office at 884-5220.

## SCHOOL CANCELLATIONS

If weather conditions are such that the school schedule may be interrupted, notification of cancellations, delays, or early dismissals will be made through the Pittsville School District Instant Alert System or on one of the stations listed below. Parents should have an emergency plan for dealing with these situations for the safety and health of their children. Do not drop children off at school on mornings when school is to be delayed, as there is not supervision on those days.

WIFC	95.5 FM	Wausau
WOFM	94.7 FM	Wausau
WOSQ	92.3 FM	Marshfield
WGLX	103.3 FM	Wis. Rapids
WSAW	TV-7	Wausau
WAOW	TV - 9	Wausau
WEAU	TV-13	Eau Claire



# PITTSVILLE SCHOOL DISTRICT NEWSLETTER

*The mission of the Pittsville Public Schools is to enable each student through his/her own efforts and the efforts of parents, educational staff, and the community to be lifelong learners, capable of adapting to change while making a positive contribution in the global community.*

**School District of Pittsville  
5459 Elementary Avenue, Suite 2  
Pittsville, WI 54466**

NON-PROFIT ORG  
US Postage  
**PAID**  
PITTSVILLE, WI  
PERMIT NO. 20

**CURRENT RESIDENT**