



SCHOOL DISTRICT OF  
**PITTSVILLE**

# DISTRICT ADMINISTRATOR'S UPDATE

## Our Vision

Expecting Excellence and Innovation, Honoring Legacy and Embracing Partnerships

## Our Mission

Expecting Excellence and Integrity from all, developing Innovative students, strengthened through Partnerships with parents and the community.

# PCCC Updates!

The School Age room received a new game called Tetris. They were very excited to learn a new game. They also designed and built polar bear dens with marshmallows and toothpicks.

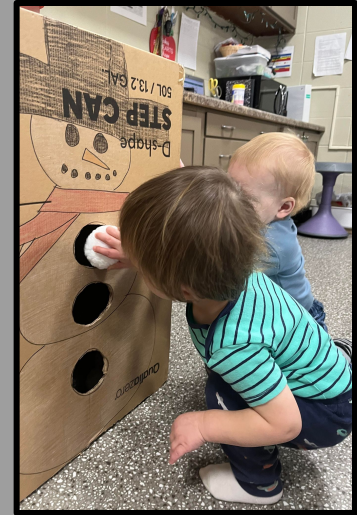


Toddlers have been busy learning their shapes and colors. They used streamers, magnetic shapes, and even our colored shapes on the wall. The kids love having a dance party with their colorful dance scarfs and shout out the colors as they wave them around.



The preschool classroom used their senses to identify different Christmas related objects. Some of the things they smelled were pine trees, hot chocolate, and candy canes (peppermint). Some different sounds that they heard by shaking different containers contained hot chocolate mix, sprinkles, and gingerbread cookies. Some of the different items that they tasted were limes, black licorice, crackers, and marshmallows. They also enjoyed stamping with Christmas bows.





Infants worked on their fine motor skills by pushing snow balls through a cardboard snowman and smushing the paint in the bag to paint pictures of snowflakes.

# **PANTHER WINTER SPORTS UPDATE**

# PANTHER WRESTLING



Over Christmas Break, the grapplers competed at the 68 team Oshkosh On The Water Tournament. Our wrestlers had some tough matches but ended up doing pretty well.

This past Thursday night we had two close duals against Chilton/Hilbert and Amherst. We lost to Chilton/Hilbert but won our dual against Amherst. This moved our record to 2-1 with two big conference matches coming up on Thursday at home against Bonduel and Weyauwega- Fremont. We have a lot of wrestling ahead of us!





**THURSDAY, JAN. 12**

**YOUTH NIGHT AT PITTSVILLE HS GYM**

*VARSITY PITTSVILLE VS. BONDUDEL AND WEYAUWEGA FREMONT*

*YOUTH WRESTLERS ARRIVE AT 5:30 PM*

*WRESTLING BEGINS AT 6 PM*

# PANTHER GIRLS' BASKETBALL



The GBB team is currently 8-2 overall and coming off a big win over previously undefeated Almond-Bancroft. The PHS girls are 3-0 in CWC-South play with a tough matchup at Wild Rose tomorrow night!







# Youth Night!





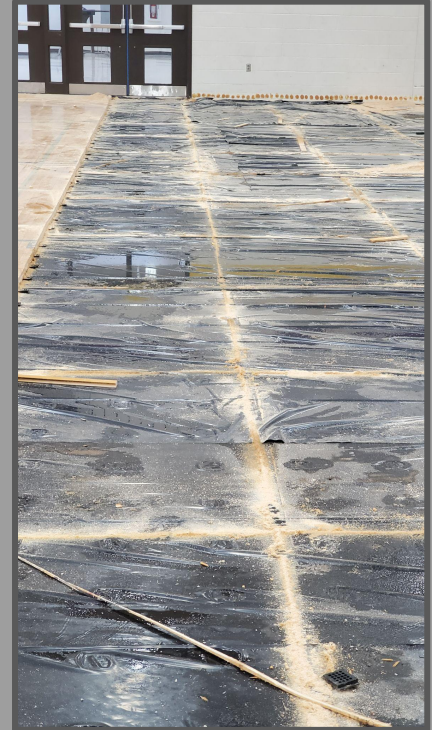
# PANTHER BOYS' BASKETBALL

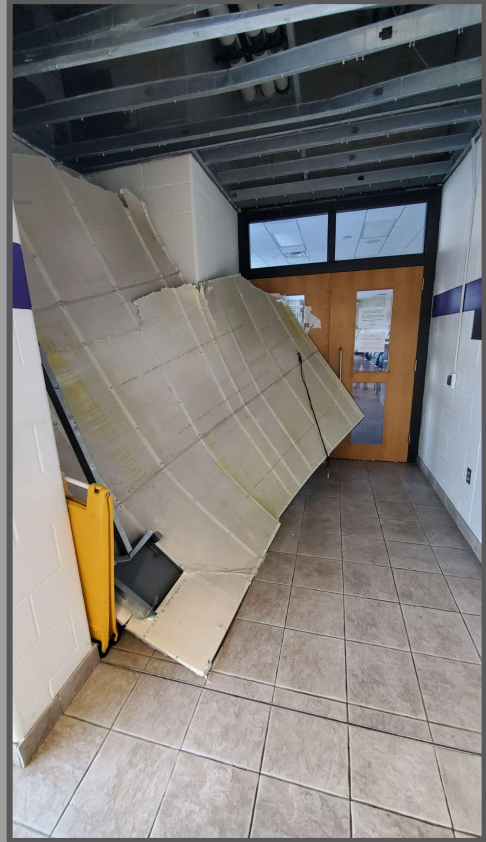
After starting the season 8-1, the boys basketball team has endured some shooting struggles and dropped their last two games. Now sitting at 8-3 overall, the Panther boys will look to get back on track tomorrow night against Greenwood.





# VARSITY GYM UPDATE







# 2023-2024 and 2024-2025 School Calendar

- Without a waiver, schools in Wisconsin are prohibited from starting prior to September 1st
- The past several years PSD has concluded classes by Memorial Day
- We have 188 professional staff days and 174 student contact days to build into the calendar.
- This current year began with 8 professional learning days for staff without students. The first day for students was on Thursday, September 1st
- 437 hours of direct pupil instruction in kindergarten, at least 1,050 hours of direct pupil instruction in grades 1 through 6, and at least 1,137 hours of direct pupil instruction in grades 7 through 12. Lunches cannot be counted, however up to 30 minutes of recess time may be counted along with transition time.

# Timeline/Process

- Administrative Team review of calendar and discussion of priorities (December/January)
- Formation of a staff advisory committee to give feedback (meetings to begin the week of January 16th)
- Survey all PSD Staff on priorities (week of January 9th)
- Survey all families in through my weekly communication (week of January 9th)
- Calendar proposal to the Board (February)

## PITTSVILLE SCHOOL DISTRICT 2022-2023 SCHOOL CALENDAR

AUGUST							SEPTEMBER							OCTOBER							NOVEMBER						
Su	M	Tu	W	Th	F	Sa	Su	M	Tu	W	Th	F	Sa	Su	M	Tu	W	Th	F	Sa	Su	M	Tu	W	Th	F	Sa
	1	2	3	4	5	6				1	2	3							1				1	2	3	INS 5	
7	8	9	10	11	12	13	4	HOL	6	7	8	9	10	2	3	4	5	6	7	8	6	7	8	9	PT	11	12
14	15	16	17	18	19	20	11	12	13	14	15	16	17	9	10	11	12	13	14	15	13	14	PT	16	17	18	19
21	INS	INS	INS	INS	26	27	18	19	20	21	22	23	24	16	17	18	19	20	21	22	20	21	22	23	HOL	NS	26
28	INS	INS	INS				25	26	27	28	29	30	23	24	25	26	27	28	29	27	28	29	30				
														30	31												

DECEMBER							JANUARY							FEBRUARY							MARCH						
Su	M	Tu	W	Th	F	Sa	Su	M	Tu	W	Th	F	Sa	Su	M	Tu	W	Th	F	Sa	Su	M	Tu	W	Th	F	Sa
			1	2	3		HOL	2	3	4	5	6	7				1	2	3	4				1	2	3	4
4	5	6	7	8	9	10	8	9	10	11	12	13	14	5	6	7	8	9	10	11	5	6	7	8	9	10	11
11	12	13	14	15	16	17	15	INS	17	18	19	20	21	12	13	14	15	16	17	18	12	13	14	15	16	INS	18
18	19	20	21	22	23	HOL	22	23	24	25	26	27	28	19	20	21	22	23	NS	25	19	20	21	22	23	24	25
HOL	NS	NS	NS	NS	NS	HOL	29	30	31					26	27	28					26	27	28	29	30	31	

APRIL							MAY							JUNE							JULY						
Su	M	Tu	W	Th	F	Sa	Su	M	Tu	W	Th	F	Sa	Su	M	Tu	W	Th	F	Sa	Su	M	Tu	W	Th	F	Sa
						1		1	2	3	4	5	6				1	2	3				1	2	3	4	
2	3	4	5	6	NS	8	7	8	9	10	11	12	13	4	5	6	7	8	9	10	2	3	HOL	5	6	7	8
HOL	NS	NS	NS	NS	NS	15	14	15	16	17	18	19	20	11	12	13	14	15	16	17	9	10	11	12	13	14	15
16	17	18	19	20	21	22	21	22	23	24	25	26	27	18	19	20	21	22	23	24	16	17	18	19	20	21	22
23	24	25	26	27	28	29	28	HOL	30	31				25	26	27	28	29	30	23	24	25	26	27	28	29	
30														30	31						30	31					

The 1st Inclement Weather Day will not be made up by students or staff.  
If needed, February 24 will be used for the 2nd Make Up Day and April 7 for the 3rd Make Up Day.

HOL	Holiday - No School	PT	Parent-Teacher Conference
INS	Teacher Inservice - No School	I	End of Quarter
NS	No School		

<u>INSERVICE - No School</u>		<u>NO SCHOOL</u>	
Aug 22-25, 29-31	Teacher Inservice	Sep 5	Labor Day
Nov 4	Teacher Inservice	Nov 24, 25	Thanksgiving Break
Jan 16	Teacher Inservice	Dec 26-30	Winter Break
Mar 17	Teacher Inservice	Feb 24	No School (Snow Make Up Day)
May 30	Teacher Inservice	Apr 7	No School (Snow Make Up Day)
		Apr 10-14	Spring Break
		May 29	Memorial Day
<b><u>MONTHLY 2 HOUR TEACHER INSERVICE MEETINGS</u></b>			
One Wednesday per month during Sep, Oct, Dec, Jan, Feb, Mar, Apr, May 3:30 - 5:30 PM			
<b><u>PARENT/TEACHER CONFERENCES</u></b>			
Nov 10	4:00-7:30 pm	1st Quarter	Sep 1 - Nov 3 45
Nov 15	4:00-7:30 pm	2nd Quarter	Nov 7 - Jan 13 43
		3rd Quarter	Jan 17- Mar 16 42
		4th Quarter	Mar 20 - May 26 44
<b><u>PCCC CLOSED</u></b>			
Sep 5 Nov 24-25 May 29 Jul 4			

FIRST DAY OF SCHOOL FOR STUDENTS - September 1  
LAST DAY OF SCHOOL FOR STUDENTS - May 26